

## Install Virtual Box for Windows 7 32bit

Oracle Support Note: [761564.1](#)

## Create Linux 32bit Virtual Machine in Virtual Box

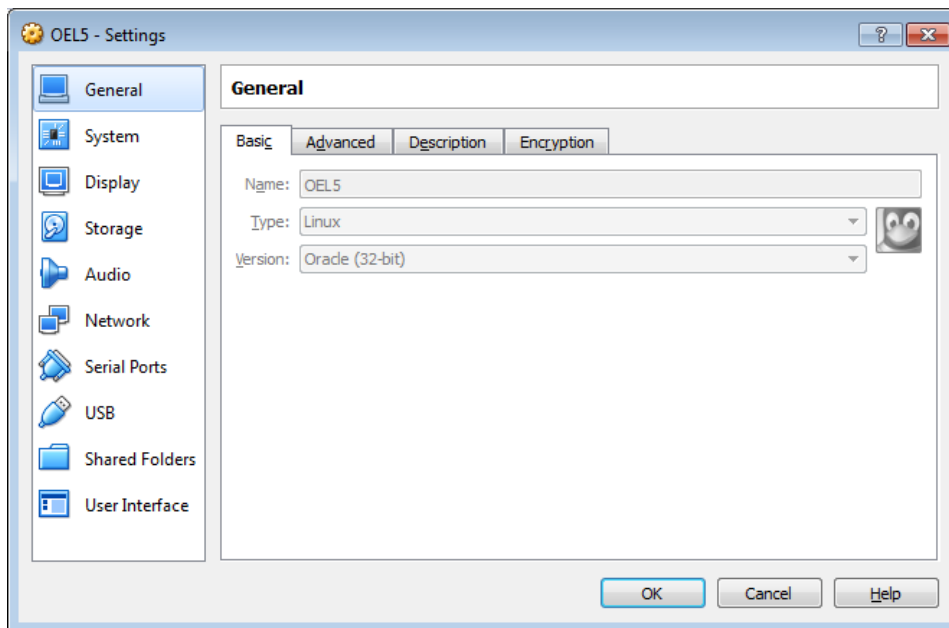
### Install Linux Server in Virtual Machine

### Install EBS 12.1.1 in Virtual Machine

## Install Virtual Box for Windows 7 32 bit

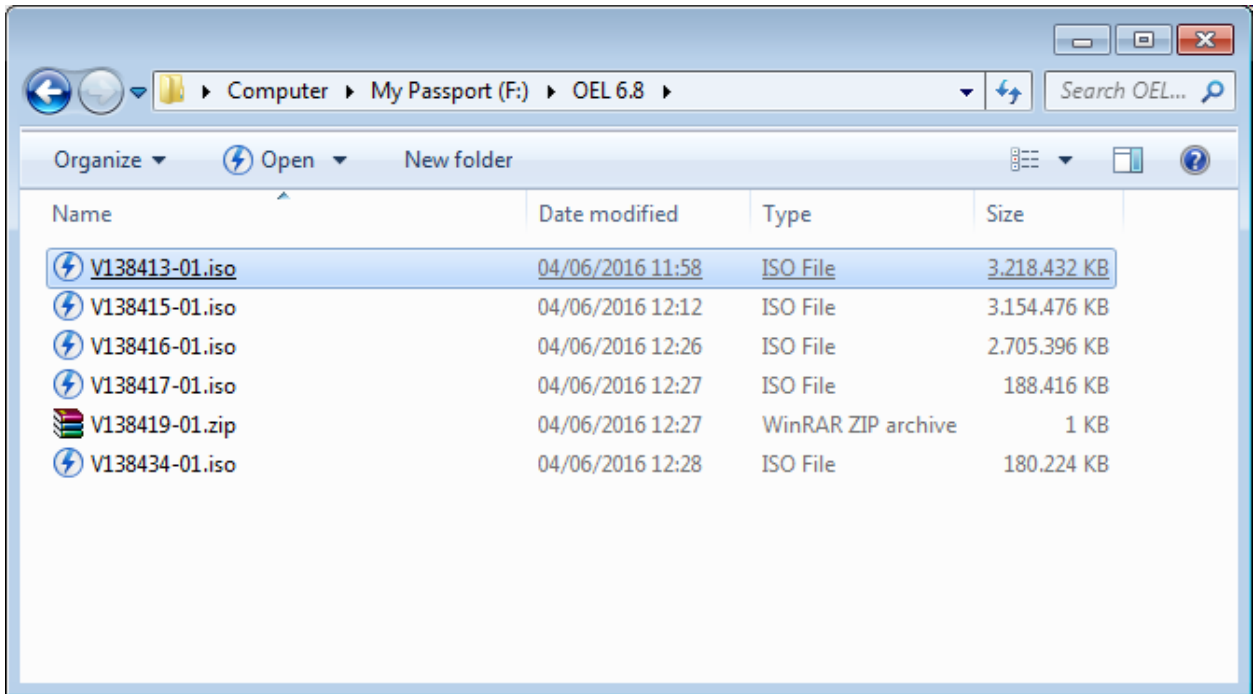
1. Download the installation from: <http://www.oracle.com/technetwork/server-storage/virtualbox/downloads/index.html>
2. Install Virtual Box

## Create Linux 32bit Virtual Machine in Virtual Box



## Install Linux Server in Virtual Machine

1. Download the installation source from oracle e-delivery (<https://edelivery.oracle.com/>)
2. Mount Daemon Tools virtual CD drive into VirtualBox Storage



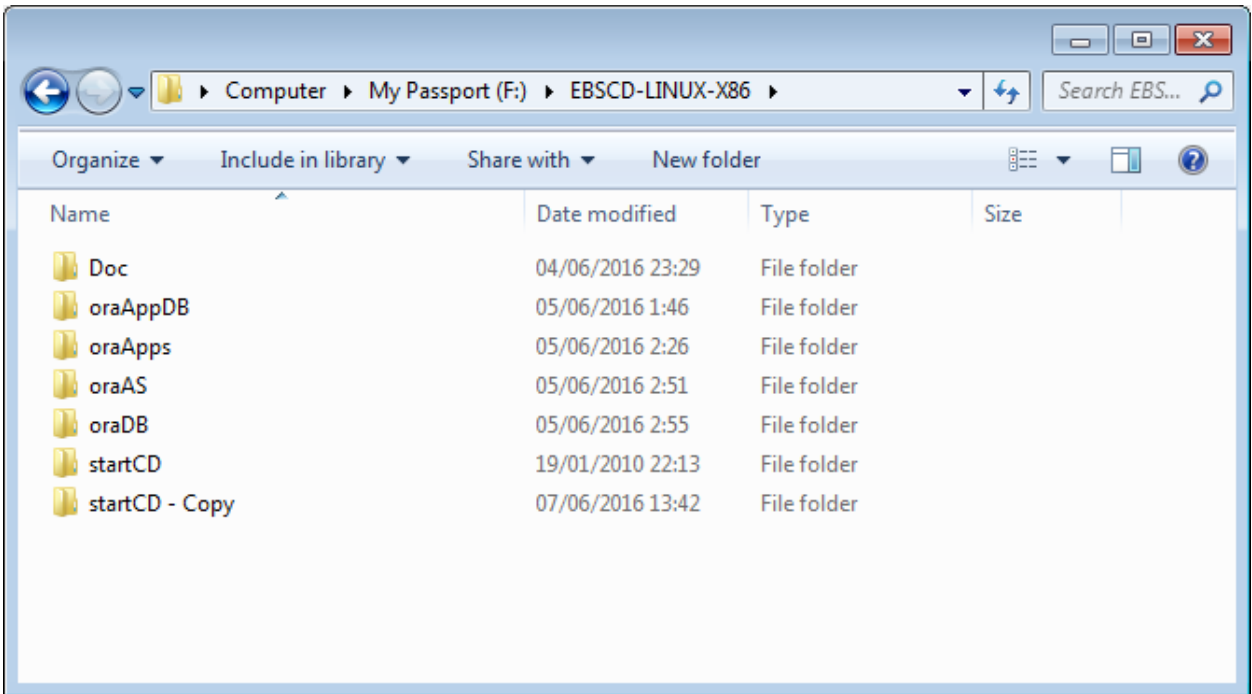
- 3.
4. Reboot from CD
5. Follow installation instructions

### Install EBS on Linux OEL 6.8

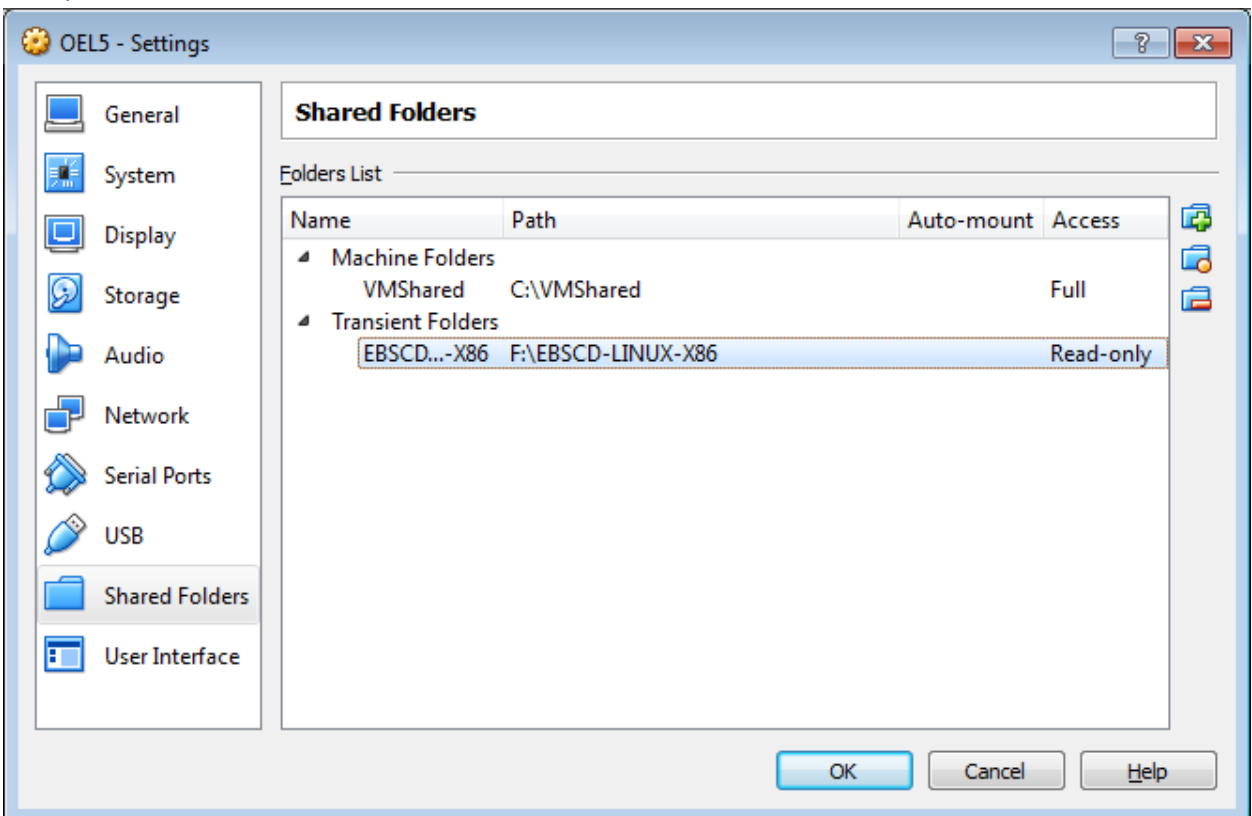
1. Root: root, password: jakarta
2. Configure OS (host, software (yum local repo), network (host-only network))
  - a. Configure hosts

```
127.0.0.1 localhost localhost.localdomain
192.168.56.1 rolnetbook.rumahbsd.com rolnetbook
::1 localhost localhost.localdomain localhost6 localhost6.localdomain6
```

- b. Configure yum/rpm to install required OS software
  - c. Configure network
3. Download EBS 12.1.1 for Linux 32 bit to host machine



4. File system share from Virtual Box to the EBS installation CD in host machine



From Guest:

```
mount -t vboxsf EBSCD-LINUX-X86 /StageR12
```

5. Download putty
6. ssh to guest using putty
7. Create group dba, user oracle and applmgr
  - a. groupadd dba
  - b. useradd -m -g dba oracle
  - c. useradd -m -g dba applmgr
8. From host:
  - a. Download and install Xming
  - b. run Xming with -ac parameter
9. Set DISPLAY to host IP
  - a. export DISPLAY=192.168.56.1:0.0
  - b. test with xclock &
10. Start rapidwiz using putty

```

root@roloel5:/StageR12/startCD/Disk1/rapidwiz
root@192.168.56.2's password:
Last login: Wed Jun  8 21:51:04 2016
[root@roloel5 ~]# export DISPLAY=rolnetbook:0.0
[root@roloel5 ~]# xclock &
[1] 2215
[root@roloel5 ~]# Warning: Missing charsets in String to FontSet conversion

[1]+  Done                  xclock
[root@roloel5 ~]#
[root@roloel5 ~]# cd /StageR12/startCD/Disk1/rap*
[root@roloel5 rapidwiz]# pwd
/StageR12/startCD/Disk1/rapidwiz
[root@roloel5 rapidwiz]# ls
adautostg.pl  driver  images  out  RapidWiz.ini  template
bin          etc     glib    rapidwiz  RapidWizVersion  unzip
ClientWiz.cmd  File   pre     RapidWiz.cmd  RapidWizVersion.cmd
[root@roloel5 rapidwiz]# ./rapidwiz -restart

Rapid Install Wizard is validating your file system.....
4 dvd labels found
Rapid Install Wizard will now launch the Java Interface.....

[root@roloel5 rapidwiz]# █

```

(use ./rapidwiz -restart if necessary), config file:  
 /oracle/EBS/inst/apps/EBS\_roloel5/conf\_EBS.txt or  
 /oracle/EBS/db/tech\_st/11.1.0/appsutil/conf\_EBS.txt  
 NOT WORKING in LINUX, need to start all over



```
root@roloel5:/StageR12/startCD/Disk1/rapidwiz
[1]+  Done                  xclock
[root@roloel5 ~]#
[root@roloel5 ~]# cd /StageR12/startCD/Disk1/rap*
[root@roloel5 rapidwiz]# pwd
/StageR12/startCD/Disk1/rapidwiz
[root@roloel5 rapidwiz]# ls
adautostg.pl  driver  images  owl  RapidWiz.ini  template
bin          etc     glib    rapidwiz  RapidWizVersion  unzip
ClientWiz.cmd  File   jre     RapidWiz.cmd  RapidWizVersion.cmd
[root@roloel5 rapidwiz]# ./rapidwiz -restart

Rapid Install Wizard is validating your file system.....
4 dvd labels found
Rapid Install Wizard will now launch the Java Interface.....

[root@roloel5 rapidwiz]# ./rapidwiz

Rapid Install Wizard is validating your file system.....
4 dvd labels found
Rapid Install Wizard will now launch the Java Interface.....

[root@roloel5 rapidwiz]#
```



### Oracle Applications Release 12.1.1 Rapid Install Wizard

This wizard will guide you through the process of installing or upgrading to Oracle Applications Release 12.1.1.

Oracle Applications includes the following principal components:

- ⊕ Oracle Database Technology Stack
- ⊕ Oracle Database
- ⊕ Oracle Applications Release 12.1.1 Technology Stack
  - └ Oracle Applications Release 12.1.1

Cancel

Help

< Back

Next >



Install Oracle Applications - Wizard Operation



### Select Wizard Operation

This wizard provides a series of screens for either creating a new installation (using the Express option if required), or performing an upgrade to Release 12.1.1 from an existing version.

Click Help for details of the options available.

- Install Oracle Applications Release 12.1.1
  - Use Express Install
- Upgrade to Oracle Applications Release 12.1.1

Cancel

Help

< Back

Next >



**Provide your email address to be informed of security issues, install the product and initiate configuration manager. [View details.](#)**

Email:

Easier for you if you use your My Oracle Support email address/username

I wish to receive security updates via My Oracle Support

My Oracle Support Password:

Cancel

Help

< Back

Next >





### Configuration Choice

If this is a new install, you will need to create a new system configuration. Alternatively, you can continue from a previous install, using the configuration information stored in the Applications database.

Do you want to create a new configuration or load a saved one?

- Create a new configuration
- Load the following saved configuration

Cancel

Help

< Back

Next >



### Global System Settings

The Port Pool mechanism is used to specify a set of port values for an Applications system. Each pool uses a unique set of values, allowing multiple environments to co-exist on the same host. Individual port values can be changed using the Edit Ports button.

Port Pool:

Derived Port Settings:


Database Port	<input type="text" value="1521"/>
RPC Port	<input type="text" value="1626"/>
Web SSL Port	<input type="text" value="4443"/>
OMS Local Port	<input type="text" value="6100"/>

Install Oracle Applications - Database Node

### Database Node Configuration

Use the Edit Paths button to see file system details.

Database Type	Fresh Database	
Database SID	VIS	
Host Name	roloel5	
Domain Name	rumahbsd.com	
Operating System	Linux (32-bit)	
Database OS User	oracle	
Database OS Group	dba	
Base directory	/oracle/VIS	<input type="button" value="Browse"/>
		<input type="button" value="Edit Paths"/>





### Select Licensing Type

Oracle Applications can be licensed using either of the following models: Suite Licensing (which allows wide access to product functionality), or Component Licensing (in which Applications products are licensed individually)

- Suite Licensing
- Component Licensing

Cancel

Help

< Back

Next >



### License Additional Products

Select additional products that you have licensed.

#### Intelligence

- Marketing & Sales Intelligence
- Supply Chain & Order Management Intelligence
- Procurement Intelligence
- Service Intelligence
- Projects intelligence
- Financials Intelligence
- Balanced Scorecard
- Enterprise Planning and Budgeting
- Profitability Manager

#### Marketing & Sales

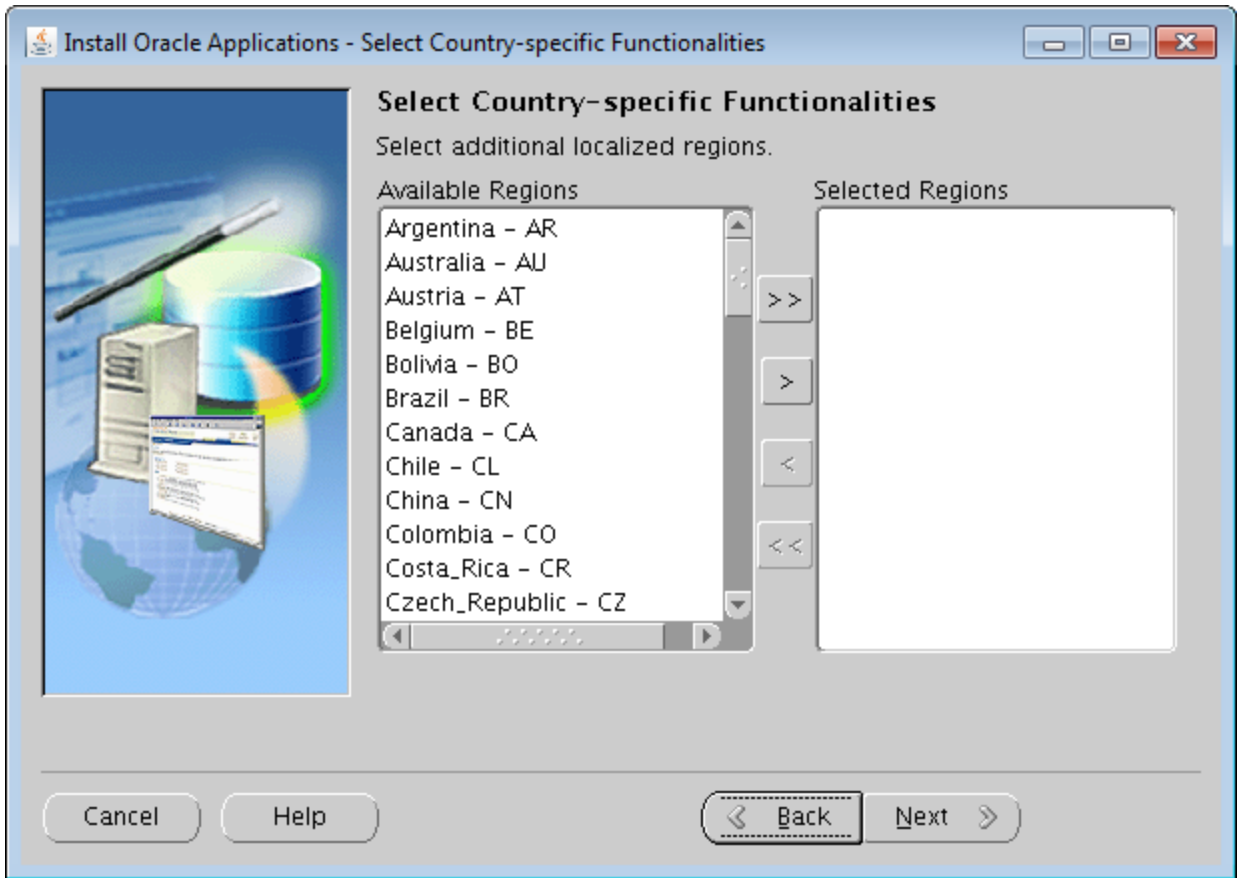
- Marketing

Cancel

Help

< Back

Next >





### Select Internationalization Settings

Choose your character sets, using languages to identify choices

Available Languages		Selected Languages
Arabic - AR	>>	American_English - US
Brazilian_Portuguese - PTB	>	
Canadian_French - FRC	<	
Croatian - HR	<<	
Czech - CS		
Denish - DK		


Default territory	AMERICA
Database character set	US7ASCII
APPL_TOP character set	US7ASCII
IANA character set	US-ASCII

Install Oracle Applications - Primary Applications Node

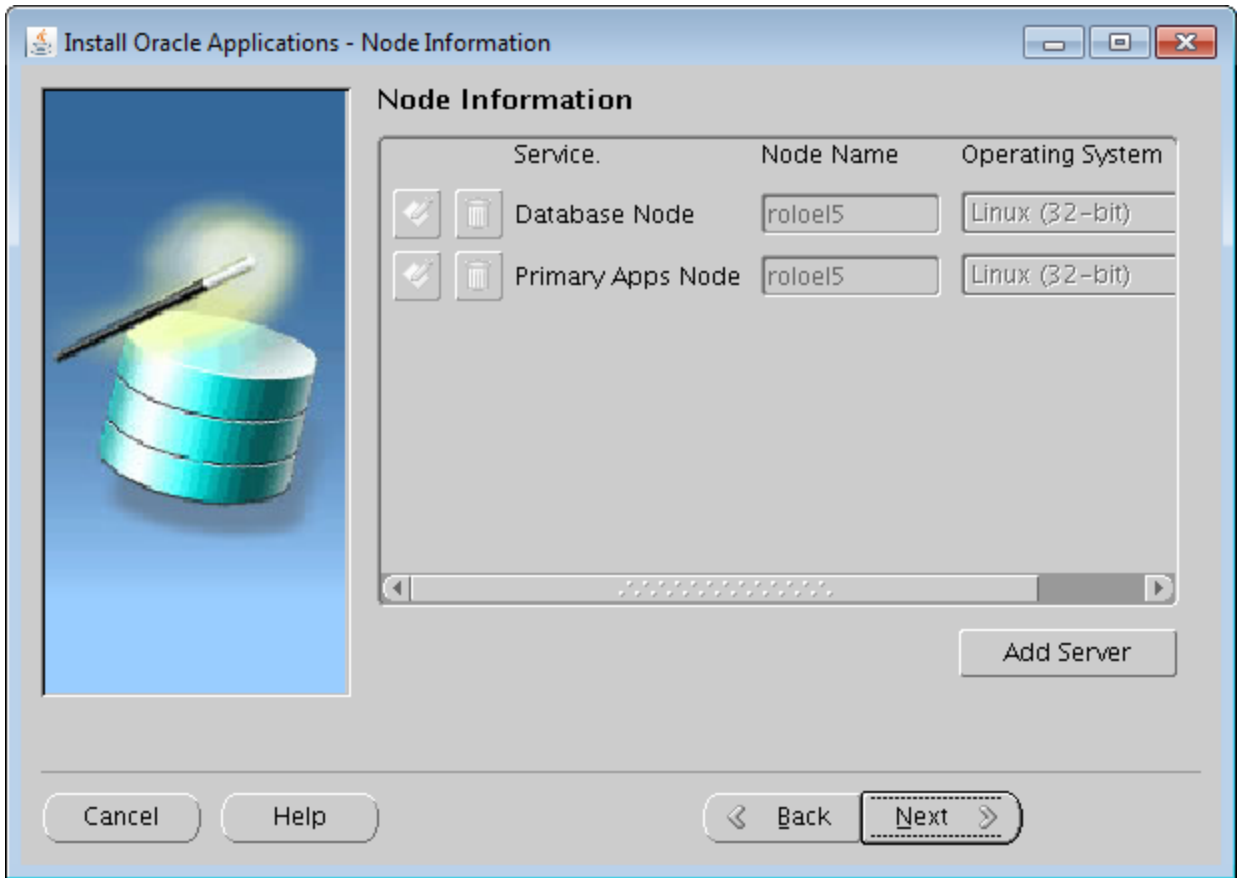
### Primary Applications Node Configuration

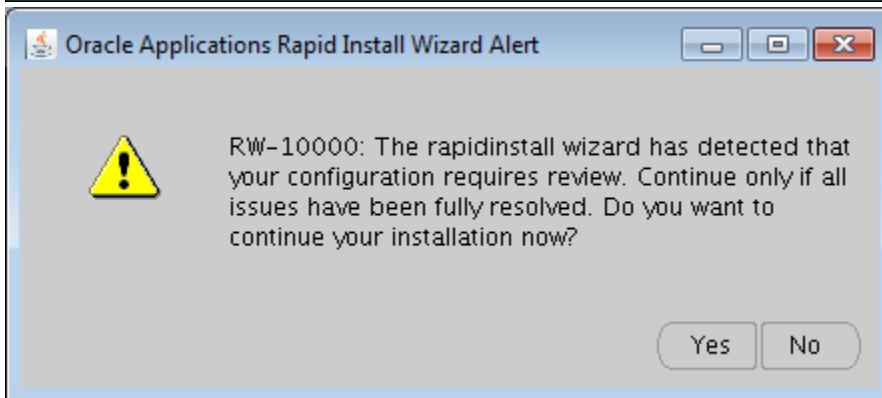
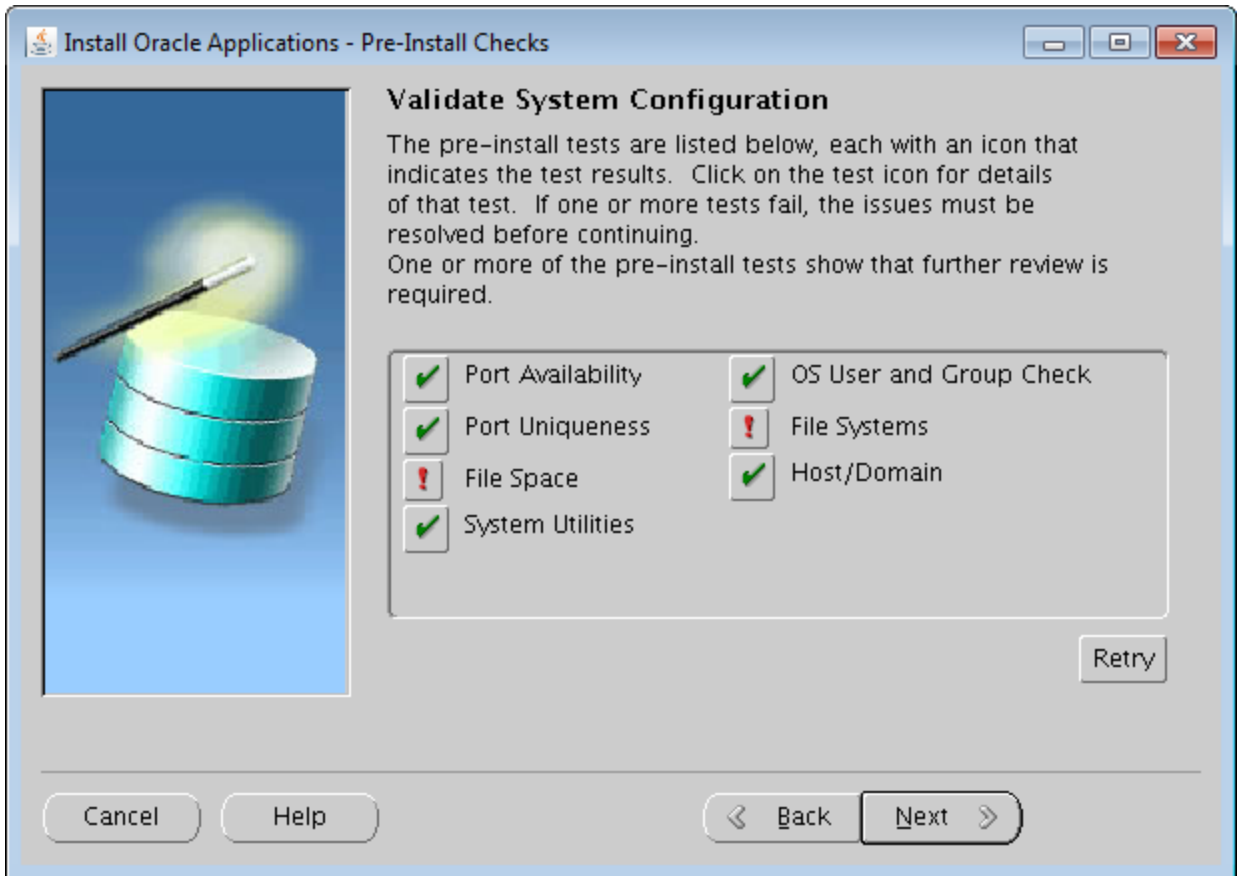
Use the edit buttons to see configuration details.

Host Name	<input type="text" value="roloel5"/>
Domain Name	<input type="text" value="rumahbsd.com"/>
Operating System	<input type="text" value="Linux (32-bit)"/>
Apps OS User	<input type="text" value="applmgr"/>
Apps OS Group	<input type="text" value="dba"/>
Base directory	<input type="text" value="/oracle/VIS"/> <input type="button" value="Browse"/>
Instance directory	<input type="text" value="/oracle/VIS/inst"/> <input type="button" value="Browse"/>

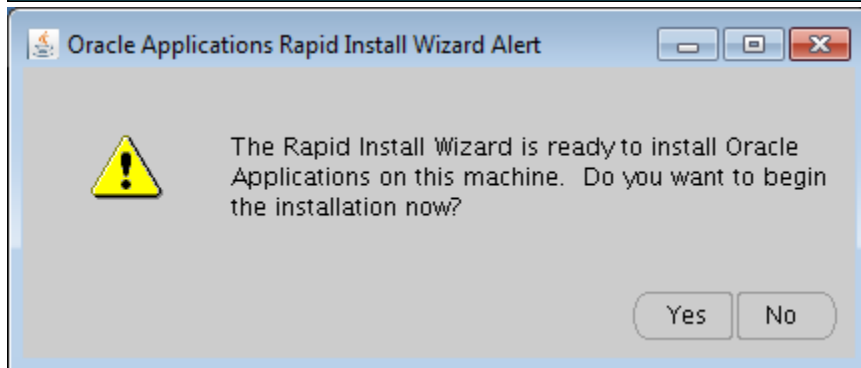
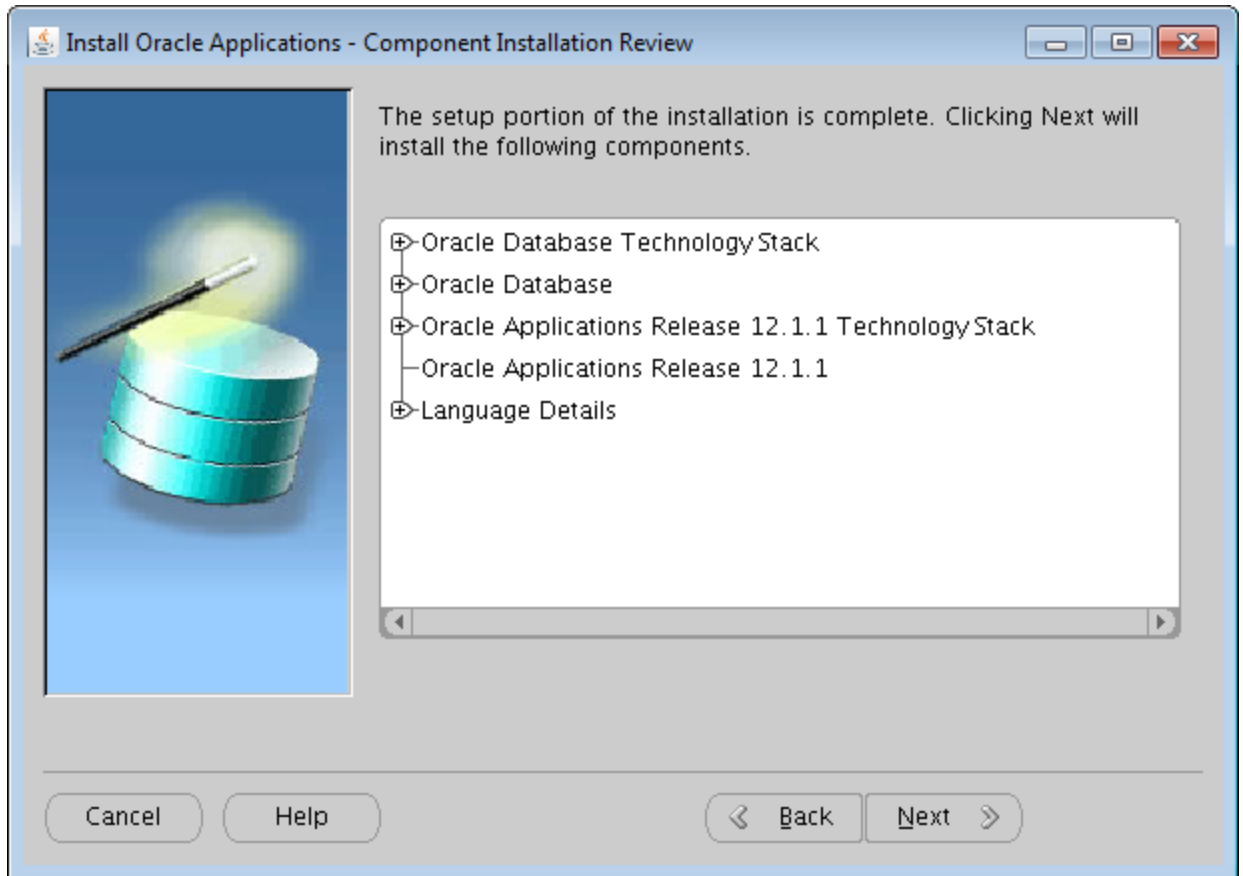




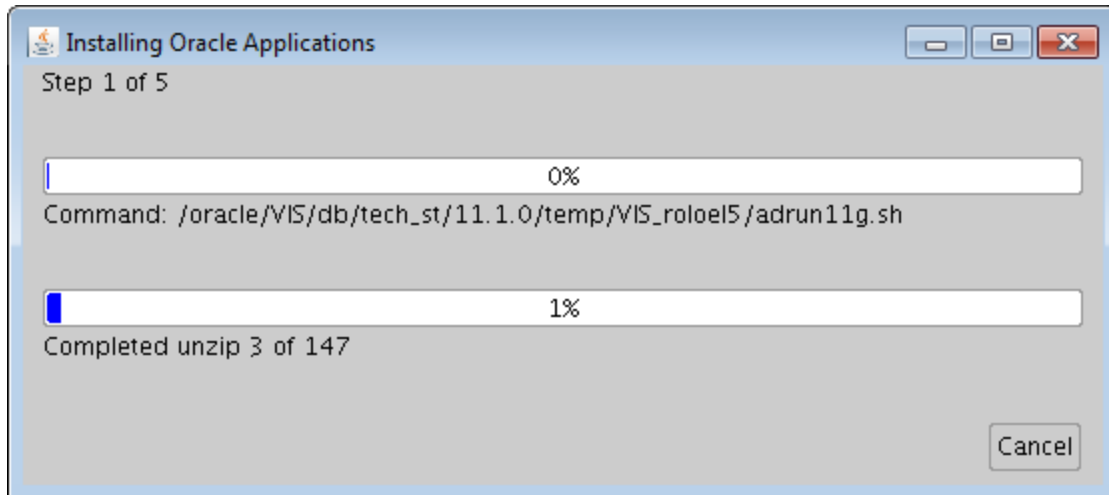




Yes



Yes



### Error related to unzip version:

```
mv /usr/sbin/unzip unzip.ver6
```

### Post Installation

Upgrade 10.1.3 to 10.1.3.5

[Upgrading to the Latest OracleAS 10g 10.1.3.x Patch Set in Oracle E-Business Suite Release 12 \(Doc ID 454811.1\)](#)

Update OPatch

As root: mount -t vboxsf VMShared /vboxshared

su – applmgrEBS

start EBS (DB and APP tier)

export DISPLAY=192.168.56.1:0.0

Run Xming in desktop/laptop with –ac parameter

xclock &

applmgr@roloel5:/vboxshared/p8626084\_101350\_LINUX/Disk1

```
[applmgr@roloel5 Disk1]$ pwd
/vboxshared/p8626084_101350_LINUX/Disk1
[applmgr@roloel5 Disk1]$ ./runInstaller -ignoreSysPrereqs -invPtrLoc /oracle/VI
S/apps/tech_st/10.1.3/oraInst.loc
Starting Oracle Universal Installer...

Checking installer requirements...

Checking operating system version: must be redhat-Red Hat Enterprise Linux AS re
lease 3, redhat-Red Hat Enterprise Linux AS release 4, redhat-Red Hat Enterprise
Linux ES release 3, redhat-Red Hat Enterprise Linux ES release 4, redhat-3, red
hat-4, redhat-5, SuSE-9 or SuSE-10

Failed <<<<

>>> Ignoring required pre-requisite failures. Continuing...

Preparing to launch Oracle Universal Installer from /tmp/OraInstall2016-06-27_09
-50-49PM. Please wait ...[applmgr@roloel5 Disk1]$ Oracle Universal Installer, Ve
rsion 10.1.0.6.0 Production
Copyright (C) 1999, 2009, Oracle. All rights reserved.

Warning: Cannot convert string "-b&h-lucida-medium-r-normal-sans-*-140-*-p-*-i
so8859-1" to type FontStruct
```

## Welcome

The Oracle Universal Installer guides you through the installation and configuration of your Oracle products.

Click "Installed Products..." to see all installed products.

Deinstall Products...

About Oracle Universal Installer...

Help

Installed Products...

Back

Next

Install

Cancel

## Specify File Locations

10<sup>g</sup>

### Source

Enter the full path of the file representing the product(s) you want to install:

Path:

### Destination

Enter or select a name for the installation and the full path where you want to install the product.

Name:   
Path:



Oracle Universal Installer

Provide your email address to be informed of security issues, install the product and initiate configuration manager. [View details.](#)

Email:

Easier for you if you use your MetaLink Email address/Username.


I wish to receive security updates via MetaLink.

MetaLink Password:

Help Installed Products... Back Next Install Cancel

ORACLE

Email Address Not Specified

 You have not provided an email address.

Do you wish to remain uninformed of critical security issues in your configuration?

Yes No



Analyzing dependencies

Loading Oracle Configuration Manager

66%

Provide your email address to be informed of security issues, install the product and initiate configuration manager. [View details.](#)

Email:

Easier for you if you use your MetaLink Email address/Username.

I wish to receive security updates via MetaLink.

MetaLink Password:

Help

Installed Products...

Back

Next

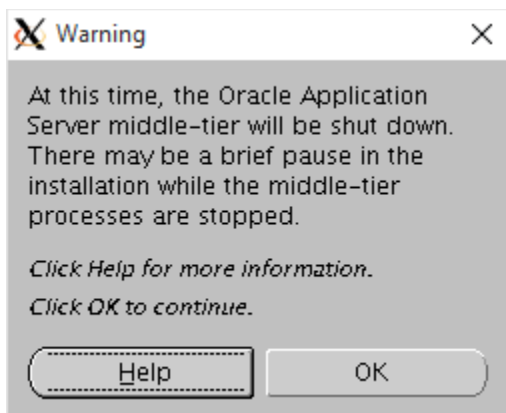
Install

Cancel

ORACLE



Password: oafm





## Summary

### Oracle Application Server PatchSet 10.1.3.5.0

Global Settings

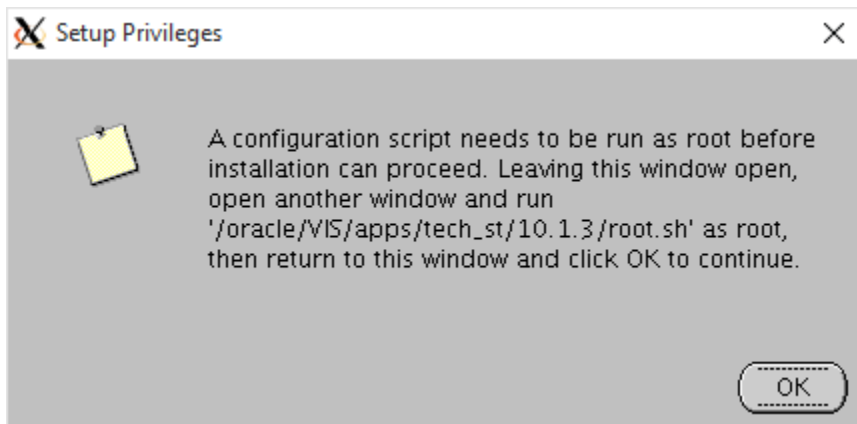
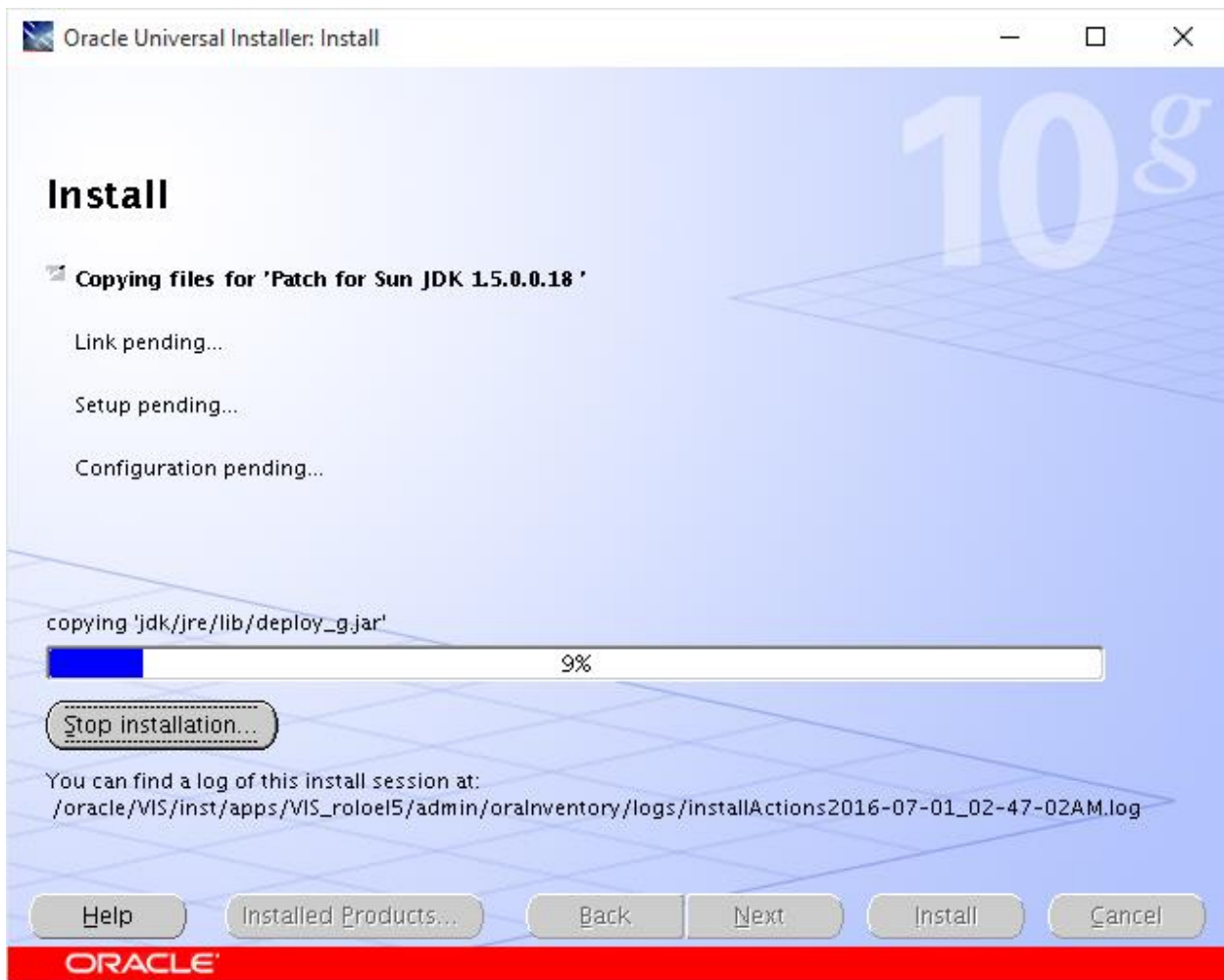
- Source: /vboxshared/p8626084\_101350\_LINUX/Disk1/stage/products.xml
- Oracle Home: /oracle/VIS/apps/tech\_st/10.1.3 (VIS\_WEBOH\_oracle\_VIS\_apps\_tech\_st\_10\_1\_3)

Product Languages

- English (United Kingdom)
- Thai
- Arabic
- Spanish
- Malay
- Swedish
- Portuguese
- German
- Polish
- Slovenian

Help   Installed Products...   Back   Next   **Install**   Cancel





root@roloel5:/oracle/VIS/apps/tech\_st/10.1.3

```
oprofile:x:16:16:Special user account to be used by OProfile:/home/oprofile:/sbin/nologin
sshd:x:74:74:Privilege-separated SSH:/var/empty/sshd:/sbin/nologin
tcpdump:x:72:72:::/sbin/nologin
vboxadd:x:498:1::/var/run/vboxadd:/bin/false
oracle:x:500:500::/home/oracle:/bin/bash
applmgr:x:501:500::/home/applmgr:/bin/bash
[root@roloel5 ~]# cd /oracle/VIS/apps/te*/10.1.3
[root@roloel5 10.1.3]# ls
ant          datadirect  ldap        owm         sqlj
Apache      deconfig   lib         perl        sqlplus
appsmisc    diagnostics mds         plsql       srvn
appsutil    dsa        META-INF   portal      sso
assistants  iaspt      network    precomp    sysman
backup_restore install     nls        rdbms      toplink
8C4J        inventory  OPatch     reinotes   txkPortList.txt
bin         j2ee       opatches   root.sh     uix
ccr         javacache  OPatch.old root.sh.old webservices
cfgtoollogs javavm     opmn       root.sh.old.1 xdk
chgip       jdbc       oracore    root.sh.old.2 xds
clone       jdk        oraInst.loc root.sh.old.3 xqs
config      jlib       ord        rules
confighomes jre        oui        slax
[root@roloel5 10.1.3]# ./root.sh
```

## Configuration Assistants

The following configuration assistants will configure and start the components you selected earlier.

Tool Name	Status	Type
<input type="checkbox"/> Run One-off Generic OPatches	In progress...	Recommended
<input checked="" type="checkbox"/> OPMN Configuration Assistant	Pending...	Recommended

[Retry](#)[Stop](#)

Details (see full log at /oracle/VIS/inst/apps/VIS\_rololE5/admin/oralInventory/logs/installActions2016-0

Inventory is good and does not have any dangling patches.

Updating inventory...

[Help](#)[Installed Products...](#)[Back](#)[Next](#)[Install](#)[Cancel](#)

## End of Installation



**The installation of Oracle Application Server PatchSet was successful.**

Please remember...

The installation of Oracle Application Server 10g Release 3 (10.1.3.5.0) Patch Set 5 was successful.

These instructions are located in `/oracle/VIS/apps/tech_st/10.1.3/install/readme.txt` for your future reference.

You can view the status of the server with the following command:

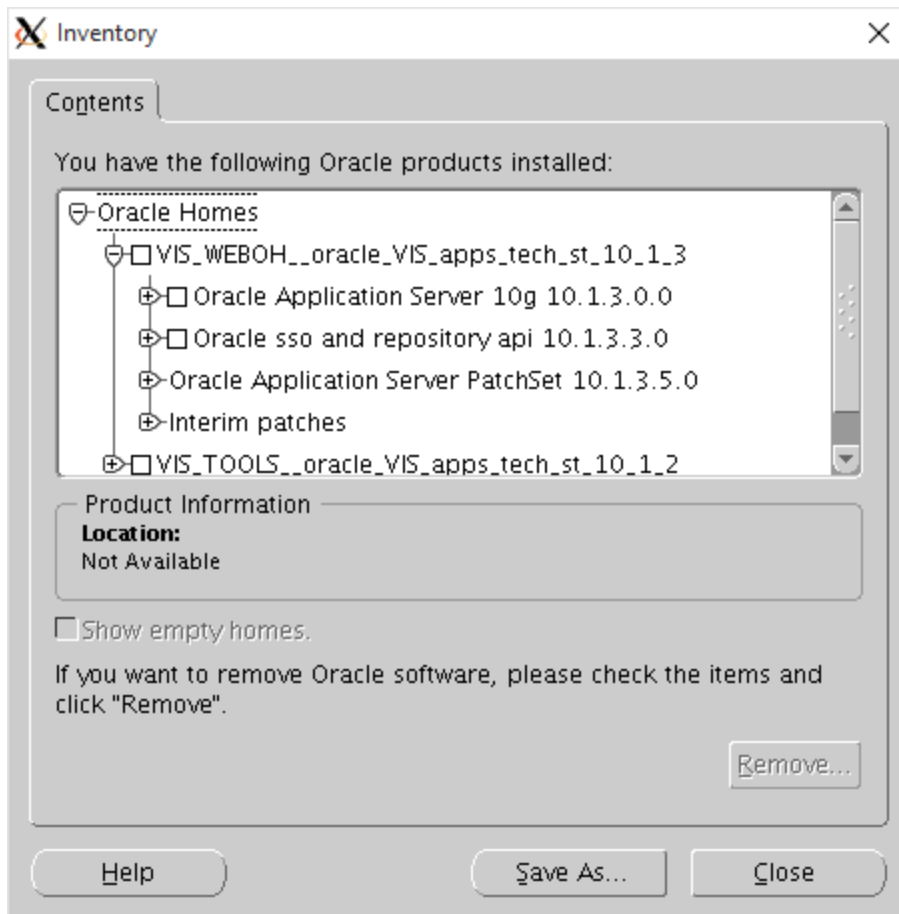
```
/oracle/VIS/apps/tech_st/10.1.3/opmn/bin/opmnctl status -l
```

Application Server Control Console is running in this instance of Oracle Application Server.

Installation Details:

- Help
- Installed Products...
- Back
- Next
- Install
- Exit





## Resize virtual drive

From Host:

```
cd "c:\program files\oracle\virtualbox"
```

```
vboxmanage modifyhd "C:\Users\Roland\VirtualBox VMs\OEL5\OEL5.vdi" --resize 104448
```

(<https://forums.virtualbox.org/viewtopic.php?f=35&t=50661>)

In Guest:

<https://blog.jyore.com/2013/06/virtualbox-increase-size-of-rhelfedoracentoscientificos-guest-file-system/>

**df**

Take note of the logical volume mapping (ex. /dev/mapper/vg\_rolael5-lv\_root)

**fdisk -l**

Take note of the filesystem partition of your physical volume sits (ex. /dev/sda2)



### **fdisk /dev/sda**

Run fdisk of this physical volume

**d**

Delete a partition

**2**

Select your partition (we are using 2 from /dev/sda2)

**n**

Create a new partition

**p**

Make it a primary partition

**2**

The partition number to make it on (same as we deleted)

**<return>**

Set the starting block (keep the default as it is usually correct)

**<return>**

Set the ending block (keep the default as it is fine for our use case)

**w**

Write the partition (will also exit fdisk shell)

**reboot**

We must reboot in order to have the new partition table loaded

**pvresize /dev/sda2**

Resizes the physical volume

**pvscan**

Use to verify the new size

**lvextend -l +100%FREE /dev/mapper/vg\_rolael5-lv\_root**

Extend the logical volume to take all free space

**resize2fs /dev/mapper/vg\_rolael5-lv\_root**

Resize the file system

**df**

See your newly sized volume

## **Adding swap**

<https://matthiashoys.wordpress.com/2012/06/19/increasing-swap-space-on-oracle-linux/>

From Host:

```
cd "c:\program files\oracle\virtualbox"
```

```
vboxmanage modifyhd "C:\Users\Roland\VirtualBox VMs\OEL5\OEL5.vdi" --resize 104448
```

(<https://forums.virtualbox.org/viewtopic.php?f=35&t=50661>)

In Guest:

<https://blog.jyore.com/2013/06/virtualbox-increase-size-of-rhelfedoracentoscientificos-guest-file-system/>

**df**

Take note of the logical volume mapping (ex. /dev/mapper/vg\_rolol5-lv\_root)

**fdisk -l**

Take note of the filesystem partition of your physical volume sits (ex. /dev/sda2)

**fdisk /dev/sda**

Run fdisk of this physical volume

**d**

Delete a partition

**2**

Select your partition (we are using 2 from /dev/sda2)

**n**

Create a new partition

**p**

Make it a primary partition

**2**

The partition number to make it on (same as we deleted)

**<return>**

Set the starting block (keep the default as it is usually correct)

**<return>**

Set the ending block (keep the default as it is fine for our use case)

**w**

Write the partition (will also exit fdisk shell)

**reboot**

We must reboot in order to have the new partition table loaded

**pvresize /dev/sda2**

Resizes the physical volume

**pvscan**

Use to verify the new size

**swapoff /dev/mapper/vg\_rolol5-lv\_swap**

**lvextend -l +100%FREE /dev/mapper/vg\_rolol5-lv\_swap**

**mkswap -c /dev/mapper/vg\_rolol5-lv\_swap**

**swapon /dev/mapper/vg\_rolol5-lv\_swap**

**swapon -s**

## Could not connect fomHost to Guest or vice versa

From Guest:

Service network restart

## Shutdown Guest Machine

Shutdown –P now

## Reboot/Restart Guest Machine

Reboot

## Check physical and logical volumes

Check physical volumes (physical disks , partitions) , volume groups, logical volumes structure:

lsblk

Create /Delete partition: fdisk (fdisk –l to list)

Logical Volume Management: lvm

Display physical volumes (physical disks , partitions): pvdisplay, pvs

Display volume groups: vgdisplay, vgs

Display logical volumes: lvdisplay, lvs

## After adding new virtual disk

Check new disk path: fdisk –l

Create new physical partition in new physical disk (named /dev/sdb) using fdisk (n, p,1). New physical partition name will be /dev/sdb1

Create filesystem in newly created physical partition: mkfs -t ext4 /dev/sdb1

Mount new filesystem: mount -t ext4 /dev/sdb1 /oracle/EBS/db/apps\_st/newdata

## Copy between filesystem using tar:

<https://blog.shadypixel.com/how-to-shrink-an-lvm-volume-safely/>

```
tar -C /oracle/EBS/db/apps_st/data -cf - . | tar -C /oracle/EBS/db/apps_st/newdata -xvf -
```

## Shrink root Logical Volume

Boot from Linux installation CD (rescue)

Activate Logical Volumes using : `vgchange -a y`

File system check (force) root file system: `fsck -f /dev/vg_rolol5/lv_root`

Resize filesystem with 90% of the final desired Logical Volume size (90% x 20GB = 18GB) : `resize2fs /dev/vg_rolol5/lv_root 18G`

Reduce Logical Volume size: `lvreduce -L20GB /dev/vg_rolol5/lv_root`

Resize filesystem to 100% of the final desired Logical Volume size (20GB) = `resize2fs /dev/vg_rolol5/lv_root`

## Resize Volume Group

Check physical volume segments: `pvs -v -segments`

Move later segments `/dev/sda:xxxx-yyyy` to the front: `pvmove -aloc anywhere /dev/sda:xxxx-yyyy`

Resize the physical volume: `pvresize --setphysicalvolumesize 24GB /dev/sda`

## Resize the partition

Fdisk -l to note current physical disk / partitions layout

`fdisk /dev/sda`

d to delete

n to create new, p for primary

## Oracle trace (alert log)

`/oracle/EBS/db/tech_st/11.1.0/admin/EBS_rolol5/diag/rdbms/ebs/EBS/trace/alert_EBS.log`

To enable env variable to "oracle" and "aplmgr" user

Edit `.bash_profile` in `/home/oracle` and in `/home/aplmgr`

Add the following line: `./oracle/EBS/db/tech_st/11.1.0/EBS_rolol5.env`

## Start EBS

`su – applmgr`

`/oracle/EBS/inst/apps/EBS_rolol5/admin/scripts/adstrtal.sh apps/apps`

## TNS Admin

`TNS_ADMIN=/oracle/EBS/db/tech_st/11.1.0/network/admin/EBS_rolol5`

## Tuning EBS

JVM memory: <https://oraclepitstop.wordpress.com/2008/09/11/how-to-change-java-heap-size-in-r12-to-avoid-javalangoutofmemoryerror-java-heap-space-error/>

## Error libdb.so.2

<https://balaoracledba.com/2014/03/04/httpd-error-while-loading-shared-libraries-libdb-so-2-cannot-open-shared-object-file-no-such-file-or-directory-2/>

httpd: error while loading shared libraries: libdb.so.2: cannot open shared object file: No such file or directory 1 comment

Review the HTTP log file. The error is very clear about the missing soft link. It would show this error:

...

<physical Path>/10.1.3/Apache/Apache/bin/apachectl startssl: execing httpd

<physical Path>/10.1.3/Apache/Apache/bin/httpd: error while loading shared

libraries: libdb.so.2: cannot open shared object file: No such file or directory

`cd /d01/oracle/EBS/inst/apps/EBS_r12/logs/ora/10.1.3/opmn`

`vi HTTP_Server~1.log`

-----

14/03/04 00:54:51 Start process

-----

/d01/oracle/EBS/inst/apps/EBS\_r12/ora/10.1.3/Apache/Apache/bin/apachectl startssl: execing httpd

/d01/oracle/EBS/apps/tech\_st/10.1.3/Apache/Apache/bin/httpd: error while loading shared libraries:  
libdb.so.2: cannot open shared object file: No such file or directory

-----

14/03/04 00:54:53 Start process

-----

/d01/oracle/EBS/inst/apps/EBS\_r12/ora/10.1.3/Apache/Apache/bin/apachectl startssl: execing httpd

/d01/oracle/EBS/apps/tech\_st/10.1.3/Apache/Apache/bin/httpd: error while loading shared libraries:  
libdb.so.2: cannot open shared object file: No such file or directory

-----

14/03/04 10:22:12 Start process

To implement the solution, please execute the following steps:

1. Shut down all Oracle Application Services.
2. As the unix root user, create a soft link as follows:

```
ln -s /usr/lib/libgdbm.so.2.0.0 /usr/lib/libdb.so.2
```

3. Start up all Oracle Application Services.

## **Error “RTNETLINK answers: File exists” when running “service network restart”**

```
dhclient eth0 -r
```

```
dhclient eth0
```

```
do for eth1, eth2, etc
```

## **Passwords**

```
root/jakarta
```

```
apps/apps
```

oracle and applmgr password are unknown (might be reset using passwd command if necessary, however using su from root is sufficient)

## User profile

Edit file `.bash_profile` using `vi`:

### For user oracle: in `/home/oracle`

Add the following line: `./oracle/EBS/db/tech_st/11.1.0/EBS_roloel5.env`

### For user applmgr: in `/home/applmgr`

Add the following line: `./oracle/EBS/inst/apps/EBS_roloel5/ora/10.1.3/EBS_roloel5.env`

## Run autoconfig

### Stop Application Tier

Source the APPS environment (or just `su - applmgr` if `/home/applmgr/.bash_profile` already configured):

Run: `./oracle/EBS/inst/apps/EBS_roloel5/ora/10.1.3/EBS_roloel5.env`

Check if the APPS environment was sourced: `echo $ORACLE_HOME` should return the path to `ORACLE_HOME` (ie: `/oracle/EBS/apps/tech_st/10.1.3`)

Stop Middle(APPS) Tier:

Go to `"/admin/scripts/"` folder: `cd /oracle/EBS/inst/apps/EBS_roloel5/admin/scripts`

Run: `./adstpall.sh`

### Run DB-Tier Autoconfig

Ensure Application Tier is Down, DB Tier is up

Source the RDBMS environment (or just `su - oracle` if `/home/oracle/.bash_profile` already configured):

Run: `./oracle/EBS/db/tech_st/11.1.0/EBS_roloel5.env`

Check that the RDBMS environment was sourced: `echo $ORACLE_HOME` (ie: `/oracle/EBS/db/tech_st/11.1.0`)

Run Autoconfig on DB-Tier:

Go to `/appsutil/scripts/` folder: `cd /oracle/EBS/db/tech_st/11.1.0/appsutil/scripts/EBS_roloel5`

Run: `./adautocfg.sh`

Check the Autoconfig log file Database Tier in `/oracle/EBS/db/tech_st/11.1.0/appsutil/log/EBS_roloel5`

If any errors (check for `ERROR` or `FAIL` words in the log files), solve it.

NOTE: it is very important to solve ALL errors from Autoconfig log files before going further in using the other AD tools (ie: `adpatch`, `adadmin`, etc.) or executing any administrative tasks.

Close the current TELNET/SSH/command window and open a new one where you will source the NEW environment you need (this must be done in order not to preserve old values from the old sourced environment)

### Run APP-Tier Autoconfig

Ensure Application Tier is Down, DB Tier is up

Source the APPS environment (or just su – applmgr if /home/applmgr/.bash\_profile already configured):

```
Run: . /oracle/EBS/inst/apps/EBS_rolael5/ora/10.1.3/EBS_rolael5.env
```

Check if the APPS environment was sourced: echo \$ORACLE\_HOME should return the path to ORACLE\_HOME (ie: /oracle/EBS/apps/tech\_st/10.1.3)

Run Autoconfig on APP-Tier:

```
Go to /admin/scripts/ folder: cd /oracle/EBS/inst/apps/EBS_rolael5/admin/scripts
```

```
Run: ./adautocfg.sh
```

Check the Autoconfig log file APP Tier in: /oracle/EBS/inst/apps/EBS\_rolael5/admin/log

If any errors (check for ERROR or FAIL words in the log files), solve it.

NOTE: it is very important to solve ALL errors from Autoconfig log files before going further in using the other AD tools (ie: adpatch, adadmin, etc.) or executing any administrative tasks.

Close the current TELNET/SSH/command window and open a new one where you will source the NEW environment you need (this must be done in order not to preserve old values from the old sourced environment)

### Restart the Middle (APPS) Tier

Source the APPS environment (or just su – applmgr if /home/applmgr/.bash\_profile already configured):

```
Run: . /oracle/EBS/inst/apps/EBS_rolael5/ora/10.1.3/EBS_rolael5.env
```

Check if the APPS environment was sourced: echo \$ORACLE\_HOME should return the path to ORACLE\_HOME (ie: /oracle/EBS/apps/tech\_st/10.1.3)

Start Middle(APPS) Tier:

```
Go to "/admin/scripts/" folder: cd /oracle/EBS/inst/apps/EBS_rolael5/admin/scripts
```

```
Run: ./adstrtal.sh
```

### Error: OC4 (oacore, oafm, forms) exiting with error 204

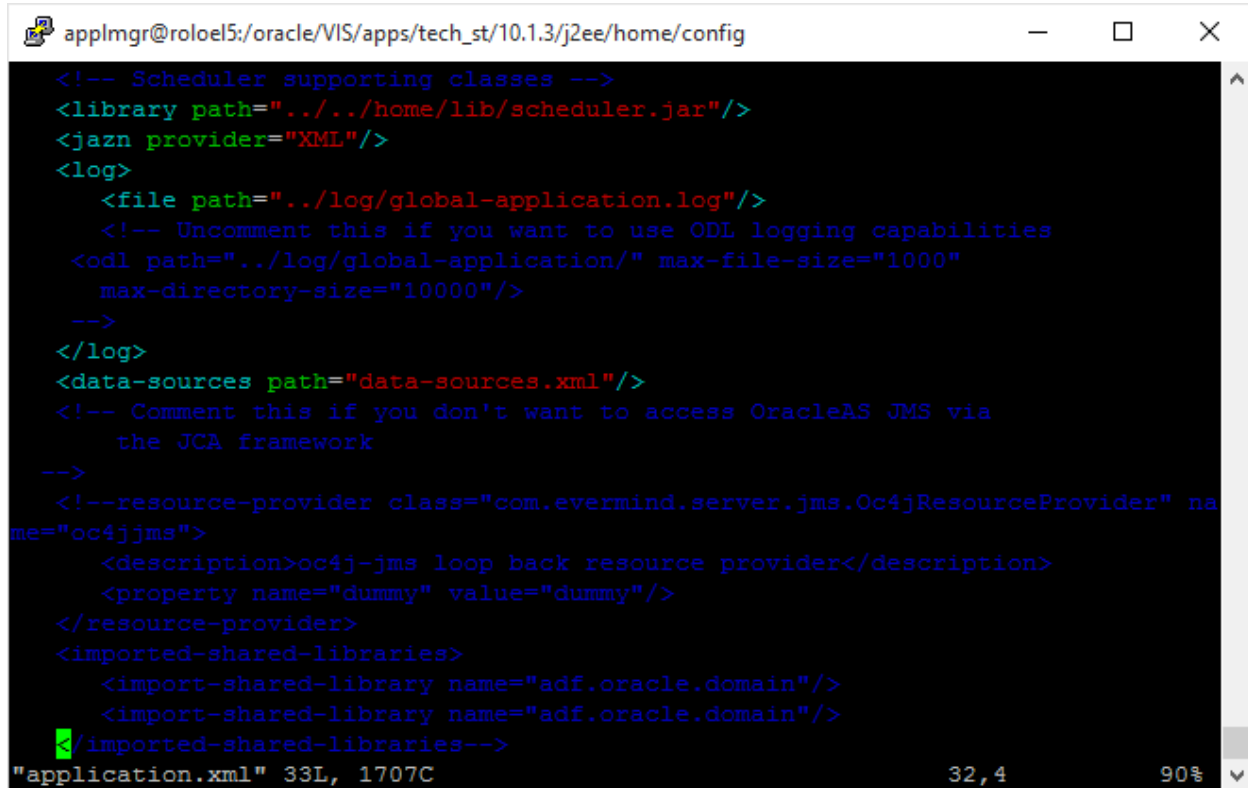
Check:



```
cd /oracle/EBS/apps/tech_st/10.1.3/j2ee/home
```

Ensure java -jar oc4.jar completed successfully

If not, edit file: /oracle/EBS/apps/tech\_st/10.1.3/j2ee/home/config/application.xml



```
applmgr@roloel5:/oracle/VIS/apps/tech_st/10.1.3/j2ee/home/config
<!-- Scheduler supporting classes -->
<library path="../../home/lib/scheduler.jar"/>
<jazn provider="XML"/>
<log>
  <file path="../../log/global-application.log"/>
  <!-- Uncomment this if you want to use ODL logging capabilities
  <odl path="../../log/global-application/" max-file-size="1000"
  max-directory-size="10000"/>
  -->
</log>
<data-sources path="data-sources.xml"/>
<!-- Comment this if you don't want to access OracleAS JMS via
the JCA framework
-->
<!--resource-provider class="com.evermind.server.jms.Oc4jResourceProvider" na
me="oc4jjms">
  <description>oc4j-jms loop back resource provider</description>
  <property name="dummy" value="dummy"/>
</resource-provider>
<imported-shared-libraries>
  <import-shared-library name="adf.oracle.domain"/>
  <import-shared-library name="adf.oracle.domain"/>
</imported-shared-libraries-->
"application.xml" 33L, 1707C 32,4 90%
```

Also check server.xml

```
cd /oracle/EBS/db/tech_st/11.1.0/oc4j/j2ee/home
```

Ensure java -jar oc4.jar completed successfully

## Login Page

[http://roloel5.rumahbsd.com:8000/OA\\_HTML/AppsLogin.jsp](http://roloel5.rumahbsd.com:8000/OA_HTML/AppsLogin.jsp)

Error: This page can't be displayed

Solution: Configure/Disable Linux Firewall (iptables)

## Disable/Enable Linux Firewall (iptables)

<https://oracle-base.com/articles/linux/linux-firewall>

### **Disable iptables:**

```
# service iptables stop
```

```
# chkconfig iptables off
```

### **Enable iptables:**

```
# service iptables start
```

```
# chkconfig --level 345 iptables on
```

### **Checking iptables status**

```
# service iptables status
```

### **Enable ftp**

```
yum install vsftpd
```

```
net start vsftpd
```

```
setsebool -P allow_ftp_full_access 1
```

### **Configure yum/rpm local repository**

<https://oracle-base.com/articles/linux/create-a-local-yum-repository-for-oracle-linux-6>

```
yum install yum-utils createrepo
```

```
create file /etc/yum.repos.d/myrepo.repo
```

```
content:
```

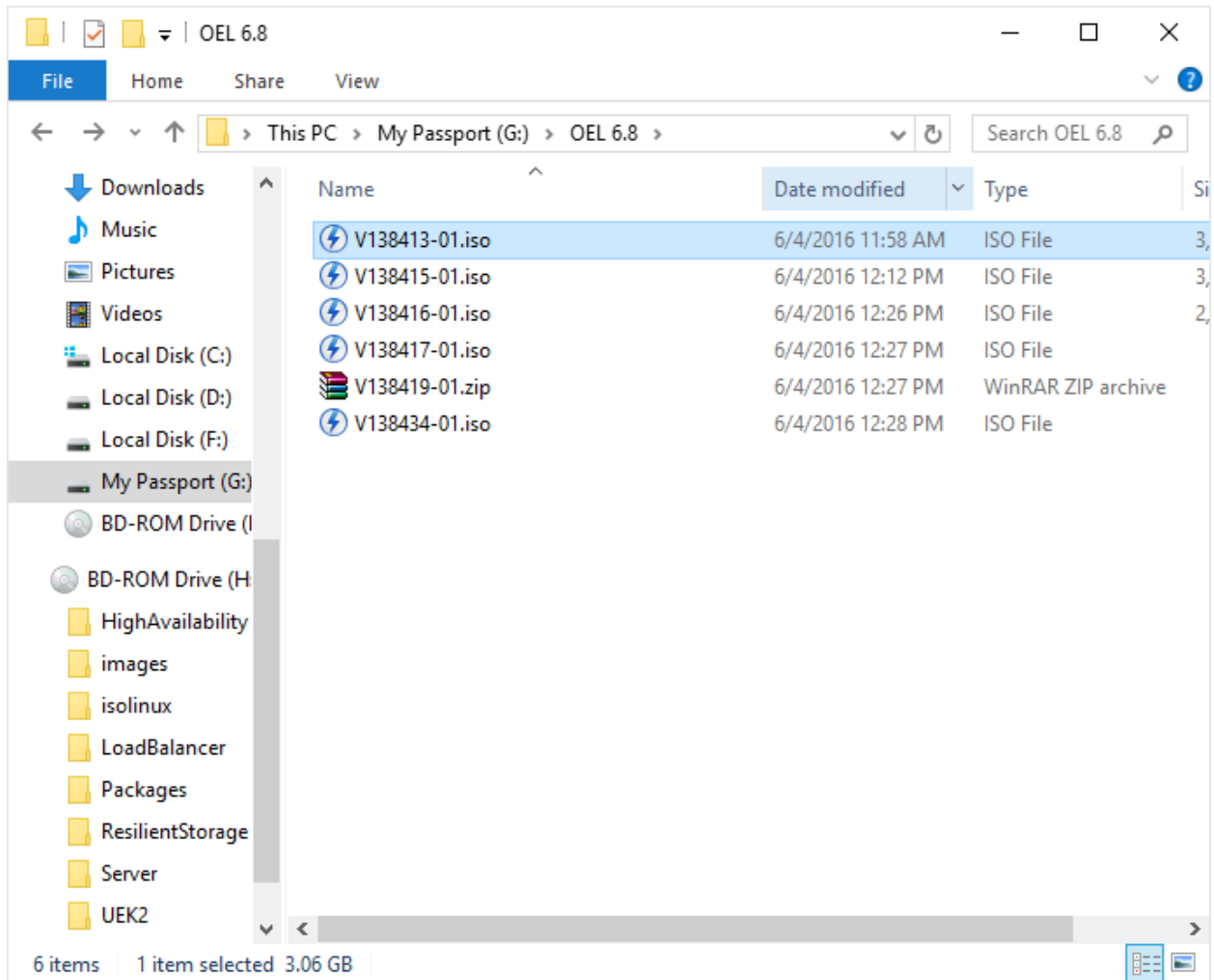
```
name=My Local Repo
```

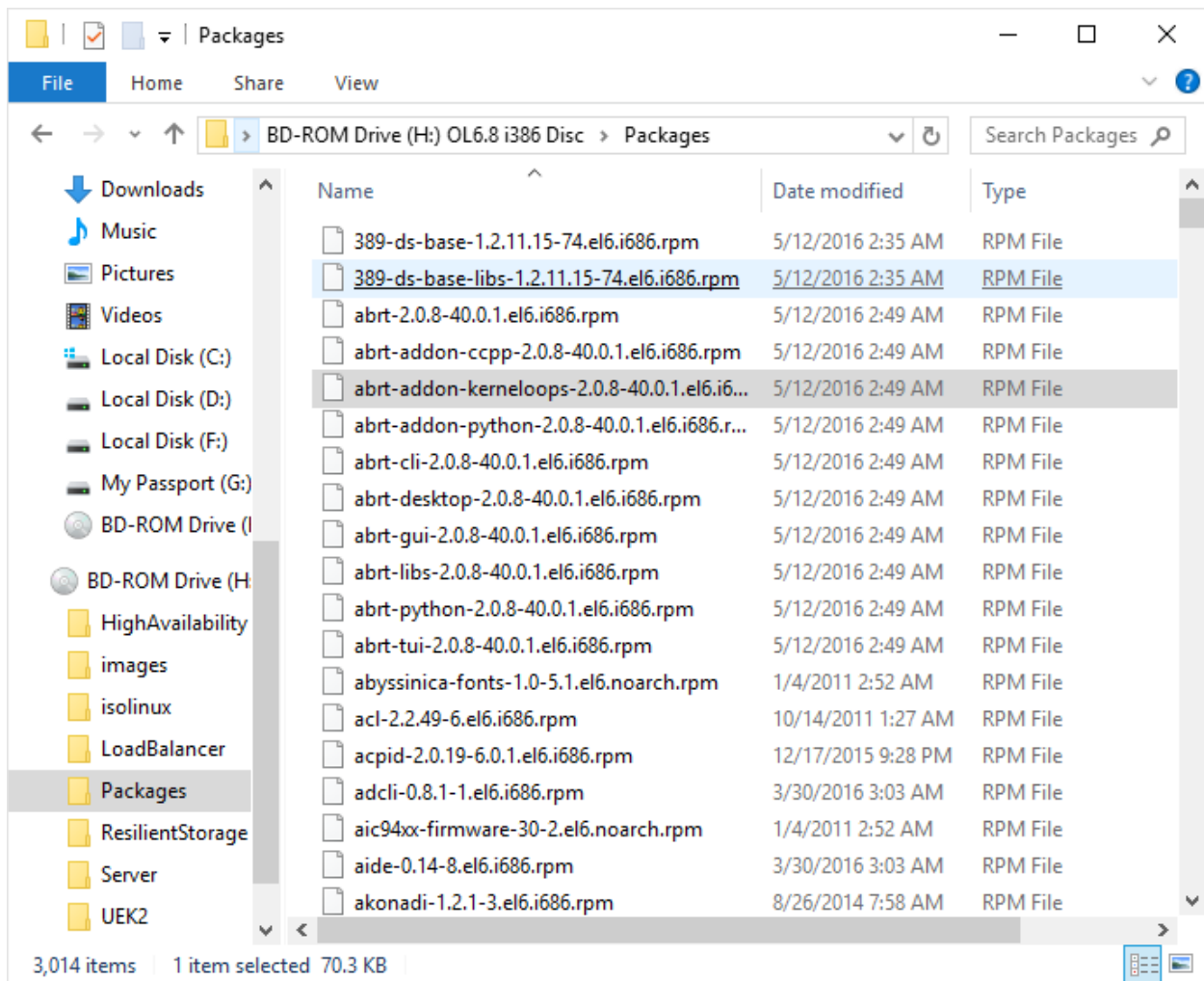
```
baseurl=file:///home/user/repo
```

```
enabled=1
```

```
gpgcheck=0
```

```
copy all *.rpm from DVD (directory : Packages) to /home/user/repo directory
```





## Internal Server Error in login page

In /oracle/EBS/inst/apps/EBS\_rolael5/logs/ora/10.1.3/Apache/error\_log.1467158400:

*[Wed Jun 29 14:03:49 2016] [warn] [client 192.168.56.1] oc4j\_socket\_recvfull timed out*

*[Wed Jun 29 14:03:49 2016] [error] [client 192.168.56.1] [ecid: 1467183528:192.168.56.2:2343:0:6,0] mod\_oc4j: request to OC4J rolael5.rumahbsd.com:21500 failed: Connect failed*

*[Wed Jun 29 14:04:58 2016] [warn] [client 192.168.56.1] oc4j\_socket\_recvfull timed out*

*[Wed Jun 29 14:04:58 2016] [error] [client 192.168.56.1] [ecid: 1467183597:192.168.56.2:3019:0:3,0] mod\_oc4j: request to OC4J rolael5.rumahbsd.com:21500 failed: Connect failed*

Solution: support Note : Broken Pipe In Application.Log Due To Timeout In HTTP (Doc ID [333862.1](#))

Edit /oracle/EBS/inst/apps/EBS\_rolael5/ora/10.1.3/Apache/Apache/conf/httpd.conf

Parameter:

Timeout 1200

KeepAlive OFF

KeepAliveTimeout 120

Also check tns ping EBS, if it takes a long time (thousands of milliseconds), check /etc/resolv.conf (comment out nameserver entries)

### **TNSPING takes long time**

check /etc/resolv.conf (comment out nameserver entries)

## **Monitoring using While**

### **Monitor TNSPING (database response time)**

```
su - oracleEBS
```

```
while true
```

```
do
```

```
tnsping EBS
```

```
sleep 3
```

```
done
```

### **Monitor database alert file**

```
tail -f /oracle/EBS/db/tech_st/11.1.0/admin/EBS_rolol5/diag/rdbms/ebs/EBS/trace/alert_EBS.log
```

### **Monitor Application heartbeat**

```
su – applmgrEBS
```

```
cd /oracle/EBS/inst/apps/EBS_rolol5/admin/scripts
```

```
while true
```

```
do
```

```
./adopmctl.sh status
```

```
sleep 3
```

```
done
```

### **Monitor apache http log**

```
cd /oracle/EBS/inst/apps/EBS_rolol5/logs/ora/10.1.3/Apache
```

ls -ltr

tail -f error\_log.xxx (the latest log file generated)

### **Monitor memory/CPU usage**

Memory/swap: free -k

CPU: top (look for load average at the top line)

## **Start/Stop EBS using own developed scripts**

### **Start EBS**

As root:

cd /root

./startEBS.sh

### **Stop EBS**

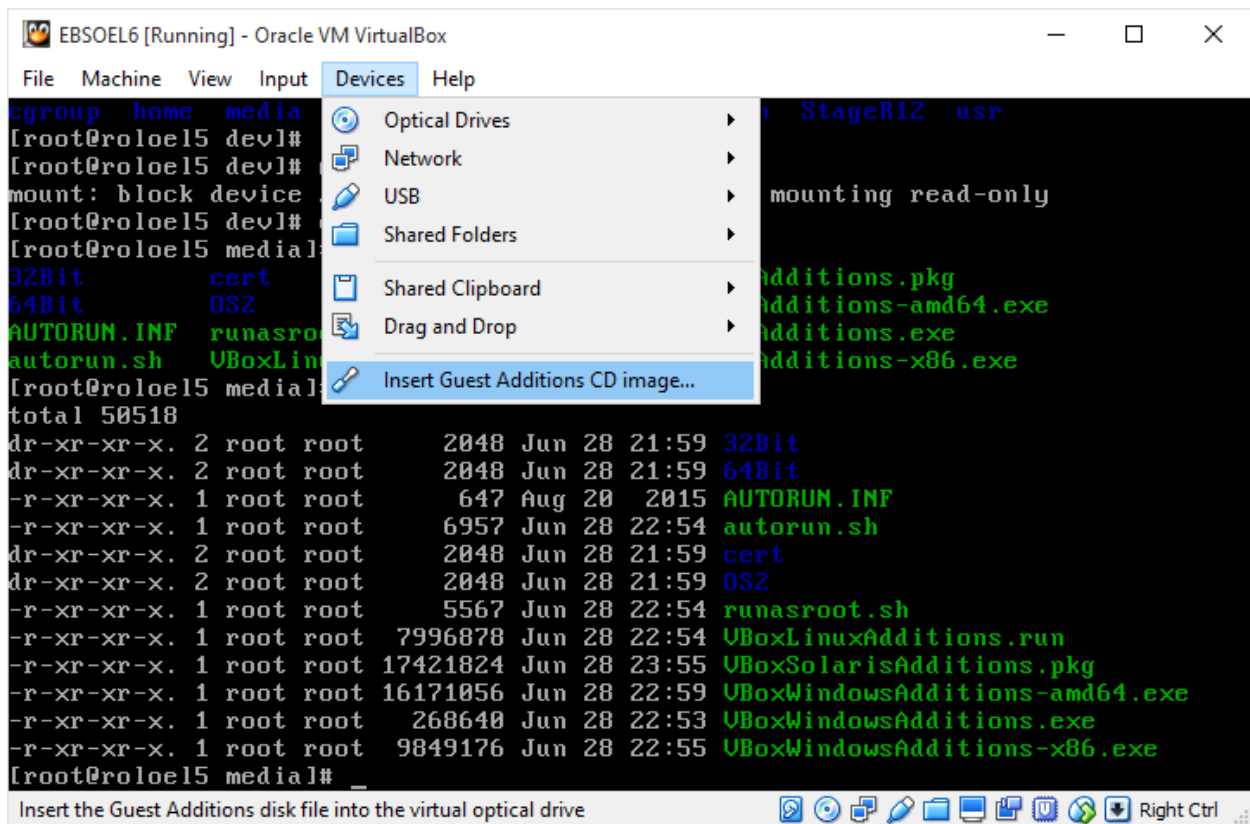
As root

cd /root

./stopEBS.sh

## **Install VirtualBox Linux Additions**

Insert media from host:



As root:

```
mount /dev/dvd /media
```

```
cd /media
```

```
./VBoxLinuxAdditions.run
```

## Other notes

### START:

```
mount /dev/sdc1 /oracle/EBS
```

```
mount /dev/sdb1 /oracle/EBS/db/apps_st/data
```

```
su - oracleEBS
```

```
lsnrctl start EBS
```

```
sqlplus /nolog
```

```
connect / as sysdba
```

```
startup
```

exit

su - applmgrEBS

cd /oracle/EBS/inst/apps/EBS\_rolael5/admin/scripts

./adstrtal.sh apps/apps

#### **CHECK:**

cd /oracle/EBS/inst/apps/EBS\_rolael5/admin/scripts

./adapcctl.sh status

#### **STOP:**

cd /oracle/EBS/inst/apps/EBS\_rolael5/admin/scripts

./adstpall.sh apps/apps

#### **Important Files**

\$INST\_TOP = /oracle/EBS/inst/apps/EBS\_rolael5

CONTEXT FILE (APPS TIER): /oracle/EBS/inst/apps/EBS\_rolael5/appl/admin/EBS\_rolael5.xml

CONTEXT FILE (DB TIER): /oracle/EBS/db/tech\_st/11.1.0/appsubtil/EBS\_rolael5.xml

DBC: /oracle/EBS/inst/apps/EBS\_rolael5/appl/fnd/12.0.0/secure/EBS.dbc

APPS ENV: /oracle/EBS/inst/apps/EBS\_rolael5/ora/10.1.3/EBS\_rolael5.env

DB ENV: /oracle/EBS/db/tech\_st/11.1.0/EBS\_rolael5.env

PFILE: startup nomount pfile=/oracle/EBS/db/tech\_st/11.1.0/dbs/initEBS.ora;

DB ALERT: /oracle/EBS/db/tech\_st/11.1.0/admin/EBS\_rolael5/diag/rdbms/ebs/EBS/trace/alert\_EBS.log

OUI: /oracle/EBS/inst/apps/EBS\_rolael5/admin/orainventory/oui

LOG\_HOME: /oracle/EBS/inst/apps/EBS\_rolael5/logs

ORACLE\_HOME (APPS TIER): /oracle/EBS/inst/apps/EBS\_rolael5/ora/10.1.3

ORACLE\_HOME (DB TIER): /oracle/EBS/db/tech\_st/11.1.0

CONFIG\_HOME: /oracle/EBS/inst/apps/EBS\_rolael5

TNS\_ADMIN=/oracle/EBS/db/tech\_st/11.1.0/network/admin/EBS\_rolael5



- A. Script to start/stop OPMN in R12 - \$ADMIN\_SCRIPTS\_HOME/adopmnctl.sh
- B. Script to start/stop HTTP Server in R12 - \$ADMIN\_SCRIPTS\_HOME/adapcctl.sh
- C. Script to start/stop oacore OC4J in R12 - \$ADMIN\_SCRIPTS\_HOME/adoacorectl.sh
- D. Script to start/stop oafm OC4J in R12 - \$ADMIN\_SCRIPTS\_HOME/adoafmctl.sh
- E. Script to start/stop forms OC4J in R12 - \$ADMIN\_SCRIPTS\_HOME/adformsctl.sh

## **DEFAULT PASSWORDS:**

### *Database*

SYS/change\_on\_install

SYSTEM/manager

### *Application Schema passwords*

APPS Schema: APPS/APPS

GWYUID User: APPLSYSPUB/PUB

Guest User: GUEST/ORACLE

### *Application Users*

SYSADMIN/sysadmin

MFG/welcome

OPERATIONS/welcome

SERVICES/welcome

MRC/welcome

HRMS/welcome

## **NETWORK:**

```
[root@roloel5 network-scripts]# more ifcfg-eth1
```

```
DEVICE=eth1
```

```
ONBOOT=yes
```

```
NM_CONTROLLED=yes
```

```
BOOTPROTO=dhcp
DEFROUTE=yes
IPV4_FAILURE_FATAL=yes
IPV6INIT=no
[root@roloel5 network-scripts]# more ifcfg-eth2
DEVICE=eth2
ONBOOT=yes
TYPE=Ethernet
NM_CONTROLLED=yes
BOOTPROTO=none
DEFROUTE=yes
IPV4_FAILURE_FATAL=yes
IPV6INIT=no
IPADDR=192.168.56.2
NETMASK=255.255.255.0
GATEWAY=192.168.56.1
DNS1=192.168.56.1
[root@roloel5 network-scripts]
```

## File Contents

```
[root@roloel5 etc]# more sysctl.conf
```

```
# Kernel sysctl configuration file for Oracle Linux
```

```
#
```

```
# For binary values, 0 is disabled, 1 is enabled. See sysctl(8) and
```

```
# sysctl.conf(5) for more details.
```

```
#
```

```
# Use '/sbin/sysctl -a' to list all possible parameters.
```

# Controls IP packet forwarding

net.ipv4.ip\_forward = 0

# Controls source route verification

net.ipv4.conf.default.rp\_filter = 1

# Do not accept source routing

net.ipv4.conf.default.accept\_source\_route = 0

# Controls the System Request debugging functionality of the kernel

kernel.sysrq = 0

# Controls whether core dumps will append the PID to the core filename.

# Useful for debugging multi-threaded applications.

kernel.core\_uses\_pid = 1

# Controls the use of TCP syncookies

net.ipv4.tcp\_syncookies = 1

# Controls the default maximum size of a message queue

kernel.msgmnb = 65536

# Controls the maximum size of a message, in bytes

kernel.msgmax = 65536

# Controls the maximum shared segment size, in bytes

kernel.shmmax = 4294967295

# Controls the maximum number of shared memory segments, in pages

kernel.shmall = 268435456

# Added by Rolando for EBS installation 5 June 2016

kernel.sem = 256 32000 100 142

kernel.shmmni = 4096

kernel.msgmni = 2878

fs.file-max = 131072

net.ipv4.ip\_local\_port\_range = 10000 65000

net.core.rmem\_default = 262144

net.core.rmem\_max = 4194304

net.core.wmem\_default = 262144

net.core.wmem\_max = 262144

*[root@roloel5 etc]# more hosts*

127.0.0.1 localhost localhost.localdomain

192.168.56.2 roloel5.rumahbsd.com roloel5

192.168.56.1 rolnetbook.rumahbsd.com rolnetbook

::1 localhost localhost.localdomain localhost6 localhost6.localdomain6

*[root@roloel5 sysconfig]# more network*

NETWORKING=yes

HOSTNAME=roloel5.rumahbsd.com

*[root@roloel5 yum.repos.d]# more myrepo.repo*

[local]

name=My Local Repo

baseurl=file:///home/user/repo

enabled=1

gpgcheck=0

*[oracle@roloel5 ~]\$ more /oracle/EBS/db/tech\_st/11.1.0/dbs/initEBS.ora*

\*.\_b\_tree\_bitmap\_plans=FALSE# Required 11i setting

\*.\_fast\_full\_scan\_enabled=FALSE

\*.\_index\_join\_enabled=FALSE# Required 11i setting

\*.\_like\_with\_bind\_as\_equality=TRUE

\*.\_optimizer\_autostats\_job=false# Turning off auto statistics

\*.\_sort\_elimination\_cost\_ratio=5

\*.\_sqlexec\_progression\_cost=2147483647

\*.\_system\_trig\_enabled=true

\*.\_trace\_files\_public=TRUE

\*.aq\_tm\_processes=1

\*.compatible='11.1.0'

\*.control\_files='/oracle/EBS/db/apps\_st/data/cntrl01.dbf','/oracle/EBS/db/apps\_s  
t/data/cntrl02.dbf','/oracle/EBS/db/apps\_st/data/cntrl03.dbf'

\*.cursor\_sharing='EXACT'# Required 11i setting

\*.db\_block\_checking='FALSE'

\*.db\_block\_checksum='TRUE'

\*.db\_block\_size=8192

\*.db\_files=512# Max. no. of database files

\*.db\_name='EBS'

\*.diagnostic\_dest='/oracle/EBS/db/tech\_st/11.1.0/admin/EBS\_rolol5'

\*.dml\_locks=10000

\*.job\_queue\_processes=2

\*.log\_buffer=10485760

\*.log\_checkpoint\_interval=100000

\*.log\_checkpoint\_timeout=1200# Checkpoint at least every 20 mins.

\*.log\_checkpoints\_to\_alert=TRUE

\*.max\_dump\_file\_size='20480'# trace file size

\*.nls\_comp='binary'# Required 11i setting

\*.nls\_date\_format='DD-MON-RR'

\*.nls\_language='american'

\*.nls\_length\_semantics='BYTE'# Required 11i setting

\*.nls\_numeric\_characters=',.'

\*.nls\_sort='binary'# Required 11i setting

\*.nls\_territory='america'

\*.olap\_page\_pool\_size=4194304

\*.open\_cursors=600# Consumes process memory, unless using MTS.

\*.optimizer\_secure\_view\_merging=false

\*.parallel\_max\_servers=8

\*.parallel\_min\_servers=0

\*.pga\_aggregate\_target=100M

\*.plsql\_code\_type='INTERPRETED'# Default 11i setting

```
*.plsql_native_library_dir='/oracle/EBS/db/tech_st/11.1.0/plsql/nativelib'
*.plsql_native_library_subdir_count=149
*.plsql_optimize_level=2# Required 11i setting
*.processes=80# Max. no. of users x 2
*.query_rewrite_enabled='true'
*.sec_case_sensitive_logon=FALSE
*.session_cached_cursors=500
*.sessions=160# 2 X processes
*.sga_target=300M
*.shared_pool_reserved_size=40M
*.shared_pool_size=100M
*.timed_statistics=true
*.undo_management='AUTO'# Required 11i setting
*.undo_tablespace='APPS_UNDOTS1'# Required 11i setting
*.utl_file_dir='/usr/tmp','/usr/tmp','/oracle/EBS/db/tech_st/11.1.0/apputil/outbound/EBS_rolol5','/usr/tmp'
*.workarea_size_policy='AUTO'# Required 11i setting
```

```
[oracle@rolol5 EBS_rolol5]$ more listener.ora
```

```
#
```

```
# $Header: ad8ilsnr.ora 120.3 2007/12/18 10:13:38 sbandla ship $
```

```
#
```

```
#####
```

```
#
```

```
# This file is automatically generated by AutoConfig. It will be read and
```

```
# overwritten. If you were instructed to edit this file, or if you are not
```

# able to use the settings created by AutoConfig, refer to Metalink Note

# 387859.1 for assistance.

#

#####

#

#

# Net8 definition for Database listener

#

EBS =

(DESCRIPTION\_LIST =

(DESCRIPTION =

(ADDRESS = (PROTOCOL = TCP)(HOST = roloel5.rumahbsd.com)(PORT = 1522))

)

)

SID\_LIST\_EBS =

(SID\_LIST =

(SID\_DESC =

(ORACLE\_HOME= /oracle/EBS/db/tech\_st/11.1.0)

(SID\_NAME = EBS)

)

)



STARTUP\_WAIT\_TIME\_EBS = 0

CONNECT\_TIMEOUT\_EBS = 10

TRACE\_LEVEL\_EBS = OFF

LOG\_DIRECTORY\_EBS = /oracle/EBS/db/tech\_st/11.1.0/network/admin

LOG\_FILE\_EBS = EBS

TRACE\_DIRECTORY\_EBS = /oracle/EBS/db/tech\_st/11.1.0/network/admin

TRACE\_FILE\_EBS = EBS

ADMIN\_RESTRICTIONS\_EBS = OFF

SUBSCRIBE\_FOR\_NODE\_DOWN\_EVENT\_EBS = OFF

IFILE=/oracle/EBS/db/tech\_st/11.1.0/network/admin/EBS\_rolol5/listener\_ifile.ora

INBOUND\_CONNECT\_TIMEOUT\_EBS=120

*[oracle@rolol5 EBS\_rolol5]\$ more sqlnet.ora*

#####

#

# This file is automatically generated by AutoConfig. It will be read and

# overwritten. If you were instructed to edit this file, or if you are not

# able to use the settings created by AutoConfig, refer to Metalink Note

# 387859.1 for assistance.

#

#\$Header: NetServiceHandler.java 120.19 2008/04/28 06:40:02 schagant ship \$

#

#####

NAMES.DIRECTORY\_PATH=(TNSNAMES, ONAMES, HOSTNAME)

SQLNET.EXPIRE\_TIME= 10

IFILE=/oracle/EBS/db/tech\_st/11.1.0/network/admin/EBS\_rolael5/sqlnet\_ifile.ora

SQLNET.INBOUND\_CONNECT\_TIMEOUT=180

*[oracle@rolael5 EBS\_rolael5]\$ more tnsnames.ora*

#####

#

# This file is automatically generated by AutoConfig. It will be read and

# overwritten. If you were instructed to edit this file, or if you are not

# able to use the settings created by AutoConfig, refer to Metalink Note

# 387859.1 for assistance.

#

#\$Header: NetServiceHandler.java 120.19 2008/04/28 06:40:02 schagant ship \$

#

#####

EBS=

(DESCRIPTION=

(ADDRESS=(PROTOCOL=tcp)(HOST=rolael5.rumahbsd.com)(PORT=1522))

(CONNECT\_DATA=

(SERVICE\_NAME=EBS)

```
(INSTANCE_NAME=EBS)
)
)
```

EBS\_FO=

```
(DESCRIPTION=
  (ADDRESS=(PROTOCOL=tcp)(HOST=roloel5.rumahbsd.com)(PORT=1522))
(CONNECT_DATA=
  (SERVICE_NAME=EBS)
  (INSTANCE_NAME=EBS)
)
)
```

EBS\_LOCAL=

```
(DESCRIPTION=
  (ADDRESS=(PROTOCOL=tcp)(HOST=roloel5.rumahbsd.com)(PORT=1522))
)
```

EBS\_BALANCE=

```
(DESCRIPTION=
  (ADDRESS_LIST=
    (LOAD_BALANCE=YES)
    (FAILOVER=YES)
    (ADDRESS=(PROTOCOL=tcp)(HOST=roloel5.rumahbsd.com)(PORT=1522))
  )
)
```

```
(CONNECT_DATA=
  (SERVICE_NAME=EBS)
)
```

EBS\_REMOTE=

```
(DESCRIPTION=
  (ADDRESS_LIST=
    (ADDRESS=(PROTOCOL=tcp)(HOST=roloel5.rumahbsd.com)(PORT=1522))
  )
)
```

extproc\_connection\_data =

```
(DESCRIPTION=
  (ADDRESS_LIST =
    (ADDRESS=(PROTOCOL=IPC)(KEY=EXTPROCEBS))
  )
  (CONNECT_DATA=
    (SID=PLSExtProc)
    (PRESENTATION = RO)
  ))
```

IFILE=/oracle/EBS/db/tech\_st/11.1.0/network/admin/EBS\_roloel5/EBS\_roloel5\_ifile.ora

## **STARTUP SEQUENCE**

[Service Control Execution Report]

The report format is:

<Service Group>      <Service>                      <Script>  
    <Status>

Root Service

    Enabled

Root Service              Oracle Process Manager for EBS\_rolol5    adopmctl.sh    Started

Web Entry Point Services

    Enabled

Web Entry Point Services    Oracle HTTP Server EBS\_rolol5          adapctl.sh

    Failed

Web Entry Point Services    OracleTNSListenerAPPS\_EBS\_rolol5      adalnctl.sh

    Started

Web Application Services

    Enabled

Web Application Services    OACORE OC4J Instance EBS\_rolol5      adoacorectl.sh    Failed

Web Application Services    FORMS OC4J Instance EBS\_rolol5      adformsctl.sh    Failed

Web Application Services    OAFM OC4J Instance EBS\_rolol5      adoafmctl.sh    Failed

Batch Processing Services

    Enabled

Batch Processing Services    OracleConcMgrEBS\_rolol5              adcmctl.sh

    Started

Batch Processing Services    Oracle Fulfillment Server EBS\_rolol5    jtffmctl.sh

    Started

Other Services

Disabled

Other Services OracleFormsServer-Forms EBS\_rolael5 adformsrvctl.sh Disabled

Other Services Oracle Metrics Client EBS\_rolael5 adfmcctl.sh

Disabled

Other Services Oracle Metrics Server EBS\_rolael5 adfmsctl.sh

Disabled

Other Services Oracle MWA Service EBS\_rolael5 mwactlwrpr.sh Disabled

ServiceControl is exiting with status 4

## Error ORA-00603 ORA-00600

### Create a new undo tablespace (NEW\_UNDO\_TBS)

```
startup mount;
```

```
show parameter undo_tablespace;
```

```
alter system set undo_management='MANUAL' scope=spfile;
```

```
shutdown immediate;
```

```
startup;
```

```
create undo tablespace new_undo_tbs datafile '/oracle/EBS/db/apps_st/data/new_undotbs_01.dbf'  
size 500M;
```

```
alter system set undo_tablespace='NEW_UNDO_TBS' scope=spfile;
```

```
alter system set undo_management='AUTO' scope=spfile;
```

```
alter tablespace new_undo_tbs add datafile '/oracle/EBS/db/apps_st/data/new_undotbs_02.dbf' size  
500M;
```

```
shutdown immediate;
```

### Drop old (UNDO\_TBS) undo tablespace

```
startup;
```

```
drop tablespace UNDO_TBS including contents and datafiles;
```

### **Recreate UNDO\_TBS undo tablespace**

```
startup mount;
```

```
show parameter undo_tablespace;
```

```
alter system set undo_management='MANUAL' scope=spfile;
```

```
shutdown immediate;
```

```
startup;
```

```
create undo tablespace undo_tbs datafile '/oracle/EBS/db/apps_st/data/undotbs_01.dbf' size 500M;
```

```
alter system set undo_tablespace='UNDO_TBS' scope=spfile;
```

```
alter system set undo_management='AUTO' scope=spfile;
```

```
alter tablespace undo_tbs add datafile '/oracle/EBS/db/apps_st/data/undotbs_02.dbf' size 500M;
```

```
shutdown immediate;
```

```
startup;
```

```
drop tablespace NEW_UNDO_TBS including contents and datafiles;
```

### **Compile APPS package**

```
su - applmgrEBS
```

```
cd /oracle/EBS/apps/apps_st/appl
```

```
./APPSEBS_rolol5.env
```

```
applmgrEBS@roloel5:/oracle/EBS/apps/apps_st/appl
[applmgrEBS@roloel5 appl]$ . ./APPSEBS_roloel5.env
[applmgrEBS@roloel5 appl]$ set
ADJREOPTS='-ms128m -mx256m'
ADJRIOPTS=-mx512m
ADJVAPRG=/oracle/EBS/apps/tech_st/10.1.3/appsutil/jdk/jre/bin/java
ADMIN_SCRIPTS_HOME=/oracle/EBS/inst/apps/EBS_roloel5/admin/scripts
ADPERLPRG=/oracle/EBS/apps/tech_st/10.1.3/perl/bin/perl
AD_APPS_JDBC_URL='(DESCRIPTION=(ADDRESS_LIST=(LOAD_BALANCE=YES) (FAILOVER=YES) (AD
DRESS=(PROTOCOL=tcp) (HOST=roloel5.rumahbsd.com) (PORT=1522))) (CONNECT_DATA=(SID=E
BS)))'
AD_TOP=/oracle/EBS/apps/apps_st/appl/ad/12.0.0
AFJCPARG=-client
AFJSMARG='-server -Xmx128m -XX:NewRatio=2 -XX:+UseSerialGC -Doracle.apps.fnd.com
mon.Pool.leak.mode=stderr:off -verbose:gc'
AFJVAPRG=/oracle/EBS/inst/apps/EBS_roloel5/admin/scripts/java.sh
AFSYSCSI=N/A
AF_CLASSPATH=/oracle/EBS/apps/tech_st/10.1.3/appsutil/jdk/lib/dt.jar:/oracle/EBS
/apps/tech_st/10.1.3/appsutil/jdk/lib/tools.jar:/oracle/EBS/apps/tech_st/10.1.3/
appsutil/jdk/jre/lib/rt.jar:/oracle/EBS/apps/apps_st/comn/java/lib/appsborg2.zip
:/oracle/EBS/apps/apps_st/comn/java/classes
AF_JLIB=/oracle/EBS/apps/apps_st/comn/java/lib
AF_JRE_TOP=/oracle/EBS/apps/tech_st/10.1.3/appsutil/jdk/jre
AF_LD_LIBRARY_PATH=/oracle/EBS/apps/tech_st/10.1.3/lib32:/oracle/EBS/apps/tech_s
t/10.1.3/lib:/oracle/EBS/apps/tech_st/10.1.2/jdk/jre/lib/i386:/oracle/EBS/apps/t
```

adadmin

```
applmgrEBS@roloel5:/oracle/EBS/apps/apps_st/appl
[applmgrEBS@roloel5 appl]$ adadmin

          Copyright (c) 2002 Oracle Corporation
          Redwood Shores, California, USA

          Oracle Applications AD Administration

          Version 12.0.0

NOTE: You may not use this utility for custom development
      unless you have written permission from Oracle Corporation.

Your default directory is '/oracle/EBS/apps/apps_st/appl'.
Is this the correct APPL_TOP [Yes] ? y

AD Administration records your AD Administration session in a text file
you specify. Enter your AD Administration log file name or press [Return]
to accept the default file name shown in brackets.

Filename [adadmin.log] :

***** Start of AD Administration session *****
AD Administration version: 12.0.0
AD Administration started at: Wed Aug 31 2016 16:25:53
```



```
applmgrEBS@roloel5:/oracle/EBS/apps/apps_st/appl
Your default directory is '/oracle/EBS/apps/apps_st/appl'.
Is this the correct APPL_TOP [Yes] ? y

AD Administration records your AD Administration session in a text file
you specify. Enter your AD Administration log file name or press [Return]
to accept the default file name shown in brackets.

Filename [adadmin.log] :

***** Start of AD Administration session *****
AD Administration version: 12.0.0
AD Administration started at: Wed Aug 31 2016 16:25:53

APPL_TOP is set to /oracle/EBS/apps/apps_st/appl

You can be notified by email if a failure occurs.
Do you wish to activate this feature [No] ?

Please enter the batchsize [1000] :

Please enter the name of the Oracle Applications System that this
APPL_TOP belongs to.
```

```
applmgrEBS@roloel5:/oracle/EBS/apps/apps_st/appl

APPL_TOP is set to /oracle/EBS/apps/apps_st/appl

You can be notified by email if a failure occurs.
Do you wish to activate this feature [No] ?

Please enter the batchsize [1000] :

Please enter the name of the Oracle Applications System that this
APPL_TOP belongs to.

The Applications System name must be unique across all Oracle
Applications Systems at your site, must be from 1 to 30 characters
long, may only contain alphanumeric and underscore characters,
and must start with a letter.

Sample Applications System names are: "prod", "test", "demo" and
"Development_2".

Applications System Name [EBS] : EBS *

NOTE: If you do not currently have certain types of files installed
```

```
applmgrEBS@roloel5:/oracle/EBS/apps/apps_st/appl
The Applications System name must be unique across all Oracle
Applications Systems at your site, must be from 1 to 30 characters
long, may only contain alphanumeric and underscore characters,
and must start with a letter.

Sample Applications System names are: "prod", "test", "demo" and
"Development_2".

Applications System Name [EBS] : EBS *

NOTE: If you do not currently have certain types of files installed
in this APPL_TOP, you may not be able to perform certain tasks.

Example 1: If you don't have files used for installing or upgrading
the database installed in this area, you cannot install or upgrade
the database from this APPL_TOP.

Example 2: If you don't have forms files installed in this area, you cannot
generate them or run them from this APPL_TOP.

Example 3: If you don't have concurrent program files installed in this area,
you cannot relink concurrent programs or generate reports from this APPL_TOP.
```

Password for SYSTEM: manager

Password for APPS: apps

```
applmgrEBS@roloel5:/oracle/EBS/apps/apps_st/appl
Reading topfile.txt ...
Saving product information.
AD code level : [B.1]

      AD Administration Main Menu
-----

1.   Generate Applications Files menu
2.   Maintain Applications Files menu
3.   Compile/Reload Applications Database Entities menu
4.   Maintain Applications Database Entities menu
5.   Change Maintenance Mode
6.   Exit AD Administration
```

Choose #3

```
applmgrEBS@roloel5:/oracle/EBS/apps/apps_st/appl

      Compile/Reload Applications Database Entities
-----

1.   Compile APPS schema
2.   Compile menu information
3.   Compile flexfields
4.   Reload JAR files to database
5.   Return to Main Menu
```

Choose #1

## Applying Patch

### Before applying patch

Download patch from Oracle Support

Extract patch to G:\VMShared folder (Shared folder specified in OVM settings)

As root: mount -t vboxsf VMShared /vboxshared (make sure it has write permission to applmgrEBS user)

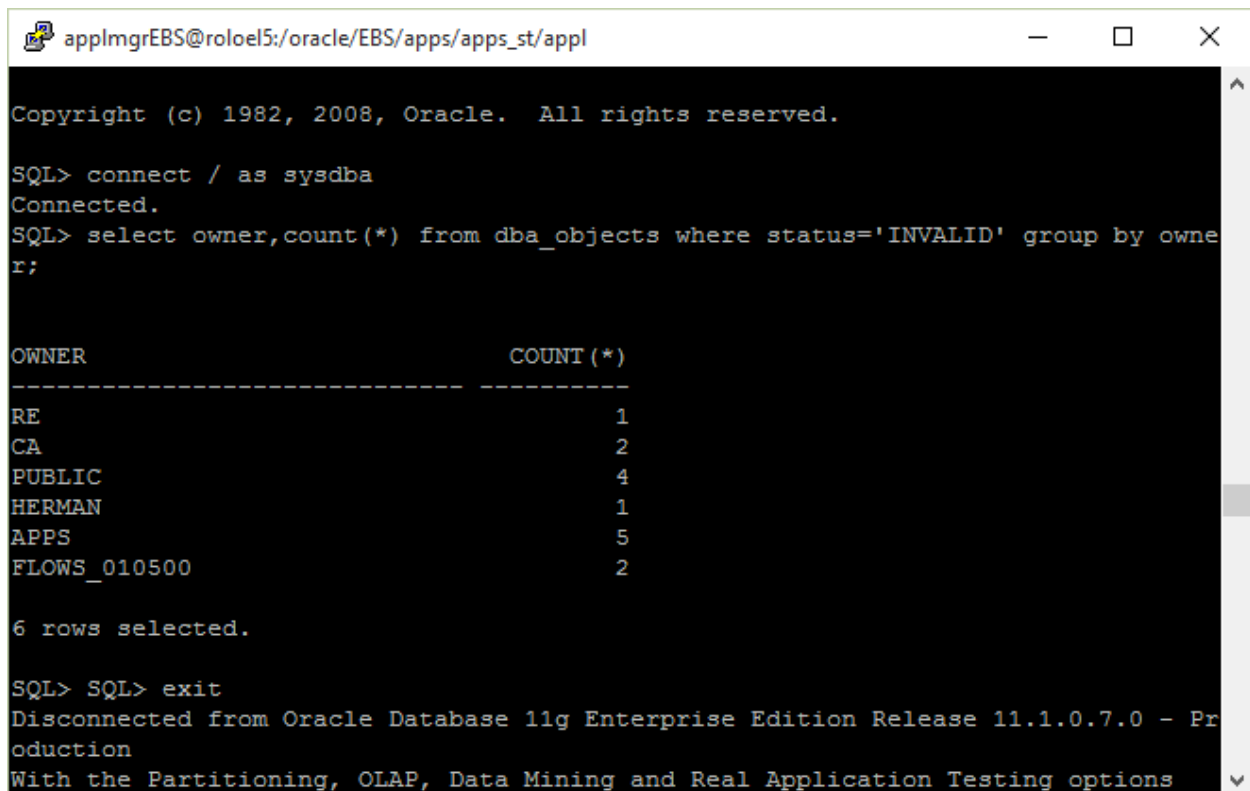
### Check invalid objects:

```
su - oracleEBS
```

```
sqlplus /nolog
```

```
connect / as sysdba
```

```
select owner,count(*) from dba_objects where status='INVALID' group by owner;
```



```
applmgrEBS@roloel5:/oracle/EBS/apps/apps_st/appl
Copyright (c) 1982, 2008, Oracle. All rights reserved.

SQL> connect / as sysdba
Connected.
SQL> select owner,count(*) from dba_objects where status='INVALID' group by owner;

OWNER                                COUNT (*)
-----                                -
RE                                     1
CA                                     2
PUBLIC                                 4
HERMAN                                 1
APPS                                   5
FLOWS_010500                           2

6 rows selected.

SQL> SQL> exit
Disconnected from Oracle Database 11g Enterprise Edition Release 11.1.0.7.0 - Production
With the Partitioning, OLAP, Data Mining and Real Application Testing options
```

### Enable maintenance mode using adadmin

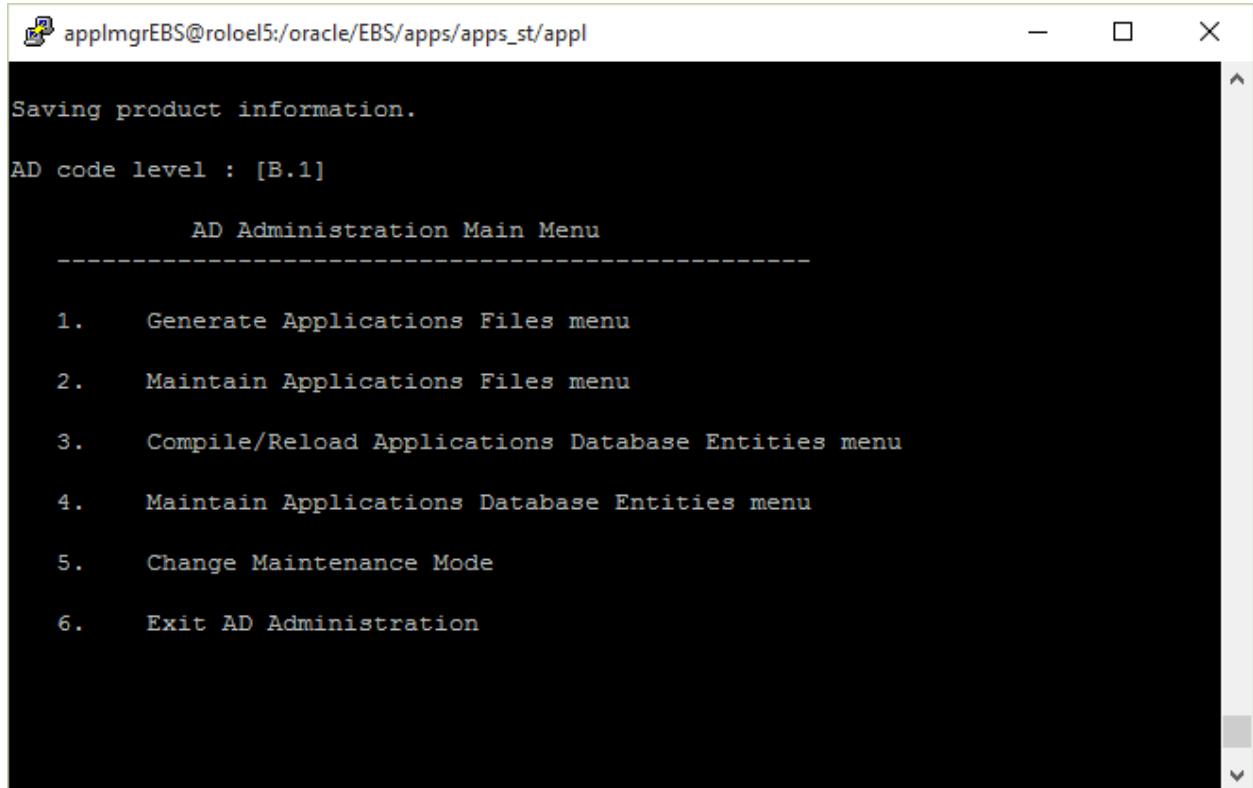
```
su - applmgrEBS
```

```
cd /oracle/EBS/apps/apps_st/appl
```

```
./APPSEBS_rolol5.env
```

```
adadmin
```

```
enable maintenance mode:
```

A terminal window titled 'applmgrEBS@rolol5:/oracle/EBS/apps/apps\_st/appl' with standard window controls. The terminal output shows the following text:

```
Saving product information.  
AD code level : [B.1]  
  
      AD Administration Main Menu  
-----  
1.   Generate Applications Files menu  
2.   Maintain Applications Files menu  
3.   Compile/Reload Applications Database Entities menu  
4.   Maintain Applications Database Entities menu  
5.   Change Maintenance Mode  
6.   Exit AD Administration
```

Choose #5

```
applmgrEBS@roloel5:/oracle/EBS/apps/apps_st/appl
Maintenance mode should normally be enabled when patching
Oracle Applications and disabled when users are logged on
to the system. See the Oracle Applications Maintenance
Utilities manual for more information about maintenance mode.

Please select an option:

1. Enable Maintenance Mode
2. Disable Maintenance Mode
3. Return to Main Menu

Enter your choice [3] : 1

sqlplus -s &un_apps/***** @/oracle/EBS/apps/apps_st/appl/ad/12.0.0/patch/115/sql
/adsetmmd.sql ENABLE

Successfully enabled Maintenance Mode.

Review the messages above, then press [Return] to continue.
```

Choose #1

### Apply Patch using adpatch

```
su - applmgrEBS
```

```
cd /oracle/EBS/apps/apps_st/appl
```

```
./APPSEBS_roloel5.env
```

```
cd /vboxshared/8294645
```

```
adpatch
```

```
applmgrEBS@roloel5:/vboxshared/8294645
[applmgrEBS@roloel5 appl]$ cd /vboxshared/8294645
[applmgrEBS@roloel5 8294645]$ ls
b8294645.ldt  marker1.txt      README.html  u8294645.drv
f8294645.ldt  patch_metadata.xml  README.txt  web
[applmgrEBS@roloel5 8294645]$ adpatch

                Copyright (c) 2002 Oracle Corporation
                Redwood Shores, California, USA

                Oracle Applications AutoPatch

                Version 12.0.0

NOTE: You may not use this utility for custom development
      unless you have written permission from Oracle Corporation.

Attention: AutoPatch no longer checks for unapplied pre-requisite patches.
You must use OAM Patch Wizard for this feature. Alternatively, you can
review the README for pre-requisite information.

Your default directory is '/oracle/EBS/apps/apps_st/appl'.
Is this the correct APPL_TOP [Yes] ?
```

Accept all defaults

```
applmgrEBS@roloel5:/vboxshared/8294645

Please enter the name Oracle Applications will use to identify this APPL_TOP.

The APPL_TOP name you select must be unique within an Oracle Applications
System, must be from 1 to 30 characters long, may only contain
alphanumeric and underscore characters, and must start with a letter.

Sample APPL_TOP Names are: "prod_all", "demo3_forms2", and "forms1".

APPL_TOP Name [roloel5] : roloel5 *

You are about to apply a patch to the installation of Oracle Applications
in your ORACLE database 'EBS'
using ORACLE executables in '/oracle/EBS/apps/tech_st/10.1.2'.

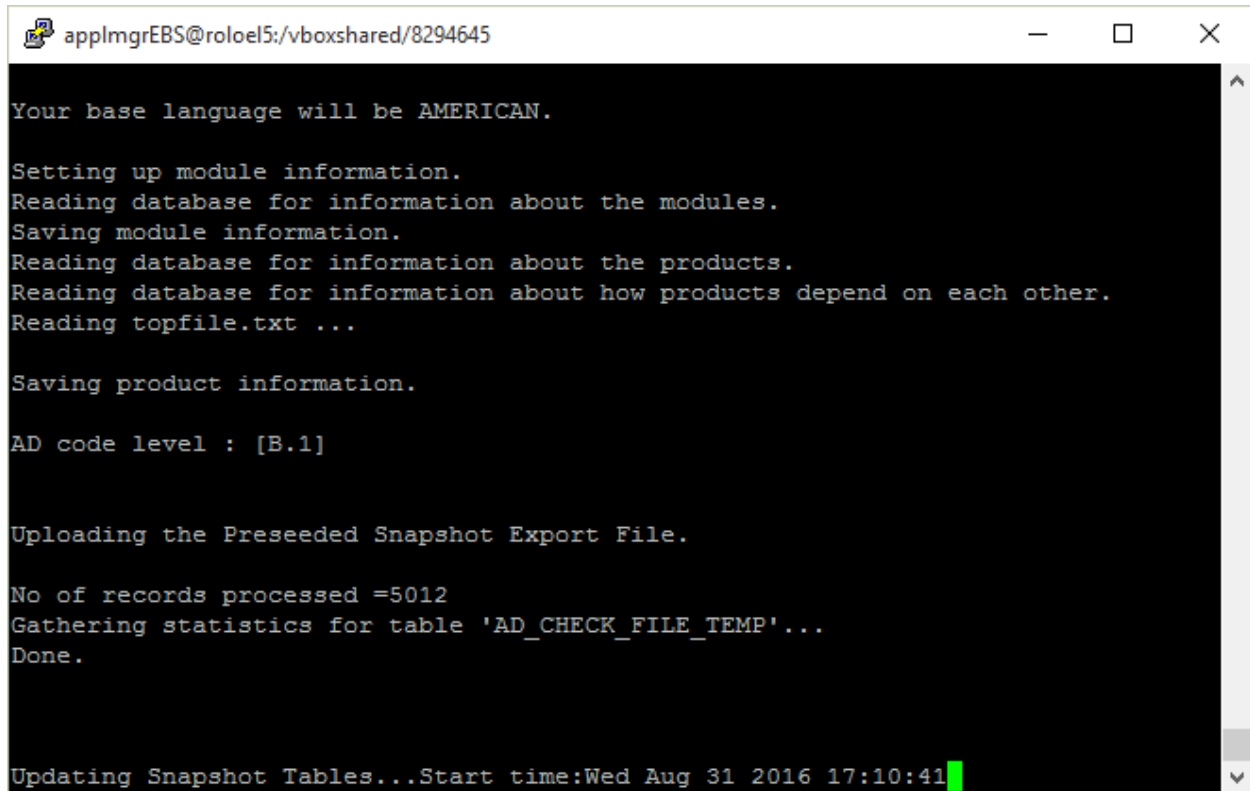
Is this the correct database [Yes] ?

AutoPatch needs the password for your 'SYSTEM' ORACLE schema
in order to determine your installation configuration.

Enter the password for your 'SYSTEM' ORACLE schema:
```

Password for SYSTEM: manager

Password for APPS: apps



applmgrEBS@roloel5:/vboxshared/8294645

```
Your base language will be AMERICAN.  
  
Setting up module information.  
Reading database for information about the modules.  
Saving module information.  
Reading database for information about the products.  
Reading database for information about how products depend on each other.  
Reading topfile.txt ...  
  
Saving product information.  
  
AD code level : [B.1]  
  
Uploading the Preseeded Snapshot Export File.  
  
No of records processed =5012  
Gathering statistics for table 'AD_CHECK_FILE_TEMP'...  
Done.  
  
Updating Snapshot Tables...Start time:Wed Aug 31 2016 17:10:41
```



```
applmgrEBS@roloel5:/vboxshared/8294645
8:16
No of records processed =140026 Updating Snapshot Tables...Start time:Wed Aug 31
2016 17:18:17
Done Updating Snapshot Tables for the above rows...End Time:Wed Aug 31 2016 17:1
8:42

No of records processed =145026 Updating Snapshot Tables...Start time:Wed Aug 31
2016 17:18:48
Done Updating Snapshot Tables for the above rows...End Time:Wed Aug 31 2016 17:1
9:01

No of records processed =150027 Updating Snapshot Tables...Start time:Wed Aug 31
2016 17:19:02
Done Updating Snapshot Tables for the above rows...End Time:Wed Aug 31 2016 17:1
9:21

No of records processed =155027 Updating Snapshot Tables...Start time:Wed Aug 31
2016 17:19:24
Done Updating Snapshot Tables for the above rows...End Time:Wed Aug 31 2016 17:1
9:45

No of records processed =160028 Updating Snapshot Tables...Start time:Wed Aug 31
2016 17:19:48
```

```
applmgrEBS@roloel5:/vboxshared/8294645
No of records processed =624853
Updating Snapshot Tables...Start time:Thu Sep 01 2016 10:35:13
Done Updating Snapshot Tables for the above rows...End Time:Thu Sep 01 201
6 10:35:16

No of records processed =629853
Updating Snapshot Tables...Start time:Thu Sep 01 2016 10:35:17
Done Updating Snapshot Tables for the above rows...End Time:Thu Sep 01 201
6 10:35:18

No of records processed =632326
Updating Snapshot Tables...Start time:Thu Sep 01 2016 10:35:19
Done Updating Snapshot Tables for the above rows...End Time:Thu Sep 01 201
6 10:35:20

Preseeded snapshot import completed successfully.

Trying to obtain a lock...

Attempting to instantiate the current-view snapshot...
```

```
applmgrEBS@roloel5:/vboxshared/8294645
Uploading information about files copied during the previous runs ...

0 "left over" filescopied_<session_id>.txt files uploaded to DB: Thu Sep 01 2016
11:10:59

***** E N D   O F   U P L O A D *****

End date: Thu Sep 01 2016 11:10:59

Already asked for the name of the patch directory.
(The answer was: /vboxshared/8294645)

Please enter the name of your AutoPatch driver file :

You must specify the name of your AutoPatch driver file

Please enter the name of your AutoPatch driver file : u8294645.dr
```

```
applmgrEBS@roloel5:/vboxshared/8294645
FND_INSTALL_PROCESSES table dropped.

Dropping AD_DEFERRED_JOBS table...

AD_DEFERRED_JOBS table dropped.

Done running SQL and EXEC commands in parallel.

Updating the checkfile repository if necessary...
Processing the last batch...
Done updating the checkfile repository...

Done running SQL scripts and EXEC commands.

Compiling invalid objects...

sqlplus -s APPS/***** @/oracle/EBS/apps/apps_st/appl/ad/12.0.0/sql/adutlrcmp.sql
APPLSYS ***** APPS ***** ***** 4 0 NONE FALSE
```

```
applmgrEBS@roloel5:/vboxshared/8294645
You should check the file
  /oracle/EBS/apps/apps_st/appl/admin/EBS/out/adt543215.lst
for details.

Purging timing information for prior sessions.

sqlplus -s APPS/***** @/oracle/EBS/apps/apps_st/appl/ad/12.0.0/sql/adtpurge.sql
10 1000

Done purging timing information for prior sessions.

AutoPatch is complete.

AutoPatch may have written informational messages to the file
/oracle/EBS/apps/apps_st/appl/admin/EBS/log/adpatch.lgi

Errors and warnings are listed in the log file
/oracle/EBS/apps/apps_st/appl/admin/EBS/log/adpatch.log

and in other log files in the same directory.

[applmgrEBS@roloel5 8294645]$
```

## After applying patch

### *Disable maintenance mode using adadmin*

```
su - applmgrEBS
```

```
cd /oracle/EBS/apps/apps_st/appl
```

```
./APPSEBS_roloel5.env
```

```
adadmin
```

```
disable maintenance mode:
```

```
applmgrEBS@roloel5:/oracle/EBS/apps/apps_st/appl
Saving product information.
AD code level : [B.1]

      AD Administration Main Menu
-----

1.   Generate Applications Files menu
2.   Maintain Applications Files menu
3.   Compile/Reload Applications Database Entities menu
4.   Maintain Applications Database Entities menu
5.   Change Maintenance Mode
6.   Exit AD Administration
```

Choose #5

```
applmgrEBS@roloel5:/vboxshared/8294645
Maintenance mode should normally be enabled when patching
Oracle Applications and disabled when users are logged on
to the system.  See the Oracle Applications Maintenance
Utilities manual for more information about maintenance mode.

Please select an option:

1.   Enable Maintenance Mode
2.   Disable Maintenance Mode
3.   Return to Main Menu

Enter your choice [3] : 2

sqlplus -s &un_apps/***** @/oracle/EBS/apps/apps_st/appl/ad/12.0.0/patch/115/sql
/adsetnmmd.sql DISABLE

Successfully disabled Maintenance Mode.

Review the messages above, then press [Return] to continue.
```

Choose#2

## ORA-00600: internal error code, arguments: [13013], [5001], [3010251],... when applying patch

<https://baioradba.wordpress.com/2013/07/04/ora-00600-internal-error-code-arguments-13013-5001-482/>

### 1. identify the table.

```
SQL> connect / as sysdba
```

Connected.

```
SQL> Select object_name,object_type,owner from dba_objects where data_object_id=3010251;
```

```
OBJECT_NAME
```

```
-----
```

```
OBJECT_TYPE    OWNER
```

```
-----
```

```
AD_SNAPSHOT_FILES
```

```
TABLE          APPLSYS
```

### 2. validate table

```
SQL> analyze table APPLSYS.AD_SNAPSHOT_FILES validate structure online;
```

Table analyzed.

```
SQL> analyze table APPLSYS.AD_SNAPSHOT_FILES validate structure cascade online;
```

```
analyze table APPLSYS.AD_SNAPSHOT_FILES validate structure cascade online
```

\*

ERROR at line 1:

ORA-01499: table/index cross reference failure - see trace file

### 3. check the index involve.

```
SQL> select index_name from dba_indexes where table_name='AD_SNAPSHOT_FILES';
```

INDEX\_NAME

-----

AD\_SNAPSHOT\_FILES\_U2

AD\_SNAPSHOT\_FILES\_N1

AD\_SNAPSHOT\_FILES\_U1

### 4. get DDL of the index and recreate it.

```
SQL> Set long 100000000
```

```
SQL> Select dbms_metadata.get_ddl('INDEX','AD_SNAPSHOT_FILES_U2','APPLSYS') from dual;
```

DBMS\_METADATA.GET\_DDL('INDEX','AD\_SNAPSHOT\_FILES\_U2','APPLSYS')

-----

```
CREATE UNIQUE INDEX "APPLSYS"."AD_SNAPSHOT_FILES_U2" ON "
APPLSYS"."AD_SNAPSHOT_FILES" ("FILE_ID",
"SNAPSHOT_ID", "CONTAINING_FILE_ID")
PCTFREE 10 INITRANS 11 MAXTRANS 255 COM
PUTE STATISTICS
STORAGE(INITIAL 131072 NEXT 131072 MINEXT
ENTS 1 MAXEXTENTS 2147483645
PCTINCREASE 0 FREELISTS 1 FREELIST GROUPS 1 BUFFE
```

R\_POOL DEFAULT)

TABLESPACE "APPS\_TS\_TX\_IDX"

DBMS\_METADATA.GET\_DDL('INDEX','AD\_SNAPSHOT\_FILES\_U2','APPLSYS')

---

SQL> drop index APPLSYS.AD\_SNAPSHOT\_FILES\_U2;

Index dropped.

SQL> CREATE UNIQUE INDEX "APPLSYS"."AD\_SNAPSHOT\_FILES\_U2" ON  
"APPLSYS"."AD\_SNAPSHOT\_FILES" ("FILE\_ID", "SNAPSHOT\_ID", "CONTAINING\_FILE\_ID") PCTFREE 10  
INITRANS 11 MAXTRANS 255 COMPUTE STATISTICS STORAGE(INITIAL 131072 NEXT 131072 MINEXTENTS  
1 MAXEXTENTS 2147483645 PCTINCREASE 0 FREELISTS 1 FREELIST GROUPS 1 BUFFER\_POOL DEFAULT)  
TABLESPACE "APPS\_TS\_TX\_IDX";

Index created.

SQL> analyze table APPLSYS.AD\_SNAPSHOT\_FILES validate structure cascade online;

Table analyzed.

## Before running any pls (PL/SQL) scripts

### Switch to APPS schema

sqlplus /nolog

connect APPS/apps as sysdba

ALTER SESSION SET CURRENT\_SCHEMA=APPS;

drop package APPS.WSH\_DELIVERY\_DETAILS\_INV

@/oracle/EBS/apps/apps\_st/appl/wsh/12.0.0/patch/115/sql/WSHDDICS.pls

@/oracle/EBS/apps/apps\_st/appl/wsh/12.0.0/patch/115/sql/WSHDDICB.pls

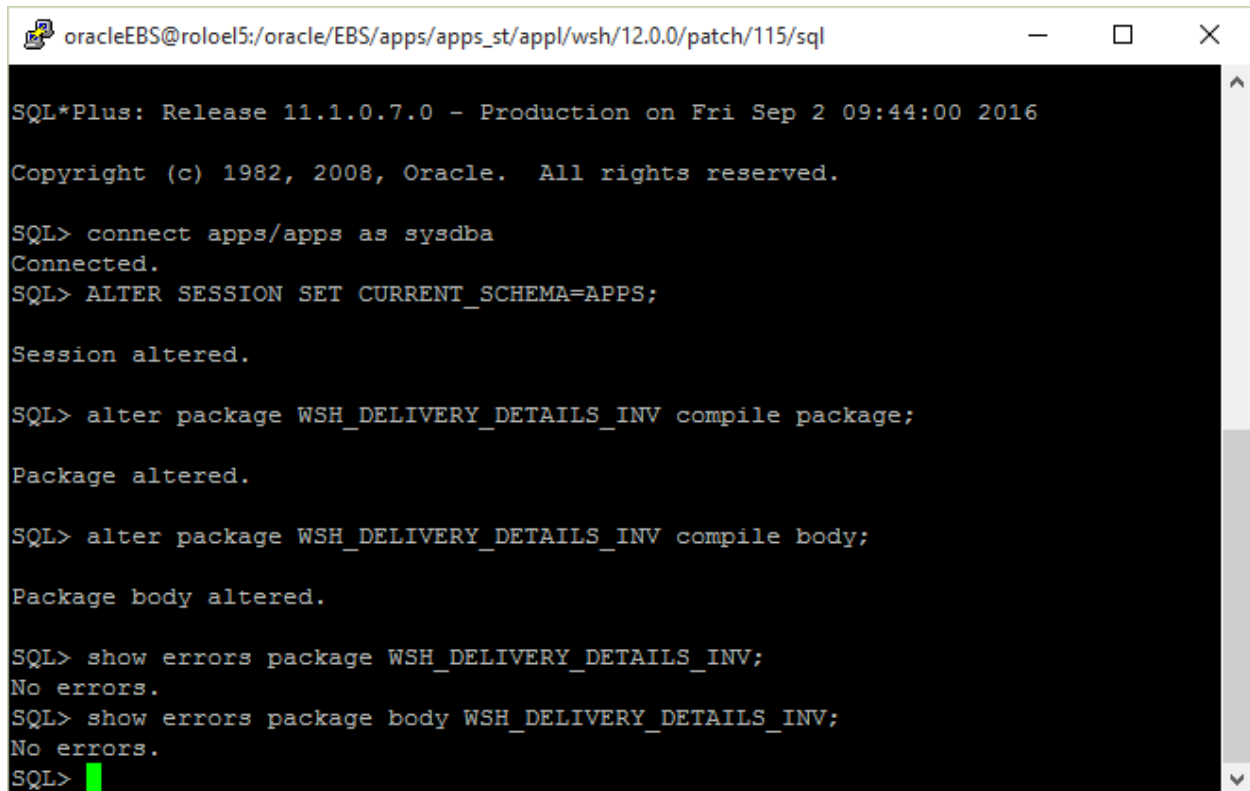
## Compiling Package

```
alter package WSH_DELIVERY_DETAILS_INV compile package;
```

```
alter package WSH_DELIVERY_DETAILS_INV compile body;
```

```
show errors package WSH_DELIVERY_DETAILS_INV;
```

```
show errors package body WSH_DELIVERY_DETAILS_INV;
```



```
oracleEBS@roloel5:/oracle/EBS/apps/apps_st/appl/wsh/12.0.0/patch/115/sql
SQL*Plus: Release 11.1.0.7.0 - Production on Fri Sep 2 09:44:00 2016
Copyright (c) 1982, 2008, Oracle. All rights reserved.

SQL> connect apps/apps as sysdba
Connected.
SQL> ALTER SESSION SET CURRENT_SCHEMA=APPS;

Session altered.

SQL> alter package WSH_DELIVERY_DETAILS_INV compile package;

Package altered.

SQL> alter package WSH_DELIVERY_DETAILS_INV compile body;

Package body altered.

SQL> show errors package WSH_DELIVERY_DETAILS_INV;
No errors.
SQL> show errors package body WSH_DELIVERY_DETAILS_INV;
No errors.
SQL>
```

## Compiling Forms

```
su - applmgrEBS
```

```
cd /oracle/EBS/apps/apps_st/appl
```

```
./APPSEBS_roloel5.env
```

```
export FORMS_PATH=$FORMS_PATH:$AU_TOP/forms/US
```

```
frmcmp_batch module=/oracle/EBS/apps/apps_st/appl/au/12.0.0/forms/US/WSHSTREF.fmb
```

```
userid=apps/apps output_file=/oracle/EBS/apps/apps_st/appl/ap/12.0.0/forms/US/WSHSTREF.fmx
```

```
module_type=form compile_all=special
```



```
mv /oracle/EBS/apps/apps_st/appl/ap/12.0.0/forms/US/ WSHSTREF.fmx $WSH_TOP/forms/US/
```

```
frmpcmp_batch module=/oracle/EBS/apps/apps_st/appl/au/12.0.0/forms/US/WSHFSTRX.fmb  
userid=apps/apps output_file=/oracle/EBS/apps/apps_st/appl/ap/12.0.0/forms/US/WSHFSTRX.fmx  
module_type=form compile_all=special
```

```
mv /oracle/EBS/apps/apps_st/appl/ap/12.0.0/forms/US/ WSHFSTRX.fmx $WSH_TOP/forms/US/
```

```
frmpcmp_batch module=/oracle/EBS/apps/apps_st/appl/au/12.0.0/forms/US/WSHQSSUI.fmb  
userid=apps/apps output_file=/oracle/EBS/apps/apps_st/appl/ap/12.0.0/forms/US/WSHQSSUI.fmx  
module_type=form compile_all=special
```

```
mv /oracle/EBS/apps/apps_st/appl/ap/12.0.0/forms/US/WSHQSSUI.fmx $WSH_TOP/forms/US/
```